



UNIVERSITY OF DELAWARE
**PROFESSIONAL &
CONTINUING STUDIES**

SPRING 2020 | PROGRAMS AND COURSES

ON THE *TRACK* TO *SUCCESS*



Following extensive research of the options, **Jessica Foote** decided to make four monthly train trips from Yale University to the University of Delaware to participate in its **Business Analysis Certificate** series. Read her story on Page 6.

[PCS.UDEL.EDU](https://pcs.udel.edu)

What can UD do for you?

In this issue...

- 1 ACADEMIC ADVISEMENT AND CAREER COUNSELING (ACCESS CENTER)**
- 2 PROFESSIONAL DEVELOPMENT PROGRAMS**
 - 3 Business & IT**
 - 9 Drones & Infrared Training**
 - 11 Education**
 - 12 Engineering & Science**
 - 13 Food & Hospitality**
 - 14 Healthcare/Health Sciences**
 - 20 Law**
 - 22 Pre-College Programs**
 - 24 Safety**
 - 27 Test Prep**
- 18 PROGRAMS-AT-A-GLANCE**
Pullout grid for quick course schedules and details.
- 28 UD ONLINE**
- 37 OSHER LIFELONG LEARNING INSTITUTE (OLLI)**

Follow #UDPCS on social media!



facebook.com/udpcs



twitter.com/ud_pcs



linkedin.com/company/udpcs

Art Director/Cover Photo: Cindy Dolan

Editorial/Marketing Staff: Susan Castelli, Sherrie Fauvelle, Adam S. Kamras, Steven M. Kendus, Tim Nelson, Nora Zelluk

POSTMASTER: Send address changes to Division of Professional and Continuing Studies, University of Delaware, Newark, Delaware 19716.

The University of Delaware is an equal opportunity/affirmative action employer.

For the University's complete non-discrimination statement, please visit <http://udel.edu/aboutus/legalnotices.html>. CEP 6472 Rev. 11/19

NEW PROGRAMS FOR SPRING

Nonprofit Management Certificate	7
Infrared Training Center	9
Art and Science of Cheesemaking for Beginners	13
Real Estate Law	20
Elder Law and Wills	21

The University of Delaware's Division of Professional and Continuing Studies (UD PCS) provides educational opportunities for anyone seeking to begin or complete their college career, enhance their professional skills or enrich their personal life. UD PCS also provides customized training and educational services to area businesses, organizations and professional associations.

As the adult and nontraditional learners' portal to the University of Delaware, UD PCS impacts thousands of students each year through UD credit courses and degree offerings, professional development courses, certificate programs, specialized conferences, workshops and lifelong learning member cooperatives throughout the state.

Through UD PCS, the University of Delaware extends its vast resources, research, technology and knowledge to the community, the region and the world. UD PCS provides:

- Academic advisement and career counseling
- Credit courses and degree completion
- Customized learning and community partnerships
- Lifelong learning opportunities
- Pre-college programs
- Professional development programs and courses
- Online learning opportunities through UD Online



CINDY DOLAN

The ACCESS Center: Academic Advisement, Credit Registration and Career Counseling

The ACCESS Center provides free academic advisement, career exploration and counseling, and credit registration assistance. Advisors are available to help you achieve your educational and career goals.

ACCESS Center services and resources include:

- Academic advisement for first-time or returning students, including assistance with course/program selection and registration.
- Career exploration and counseling, including administration of career inventories.
- Unofficial transcript evaluation and curriculum review for prospective transfer students.
- Information and assistance with the University's admission and readmission processes.
- Information regarding UD resources and student services.
- Information on University policies and procedures.

Explore your options! In-person and phone appointments are available. Contact the ACCESS Center for an appointment.

UD Professional & Continuing Studies ACCESS Center
501 S. College Avenue, Newark, DE 19716

Phone: 302-831-8843 • Fax: 302-831-2789

access-advise@udel.edu • pcs.udel.edu/access

Power Up Your Career Seminars

Special career- and personal branding-focused seminars are available to students enrolled in Professional and Continuing Studies (PCS) noncredit programs, as well as veterans and active military members, at no additional charge. Seminars are also available to those not enrolled in PCS programs for a \$50 fee, or \$25 for UD students, which includes all sessions. The following seminars are offered on Saturday mornings in Newark, Del.

- Top 10 Coaching Skills (February 8)
- Building Your Professional Brand (March 14)
- Public Speaking—Building Your Confidence (April 11)
- Networking Across the Lifespan (May 9)

See pcs.udel.edu/power-up for more information.

Credit courses and degree completion

Whether you are a high school student seeking the challenge of college coursework, an adult looking to start or complete a degree, or someone interested in taking individual courses for personal, educational or professional enrichment, you may take UD courses as a Continuing Education, non-admitted student. You do not have to be officially admitted to the University to get started. As long as you meet the course prerequisites, many University courses are available to Continuing Education students on a space-available basis. A wide variety of courses are offered in the evening and online.

Spring courses begin Monday, February 10, 2020.

Ready to search for a course? Visit udel.edu/courses.

Ready to register? Visit pcs.udel.edu/registration.

Lifelong learning opportunities

The University of Delaware hosts Osher Lifelong Learning Institute (OLLI) programs in Bridgeville, Dover, Lewes, Ocean View and Wilmington for adults to enjoy classes, teach, exchange ideas and travel together. Try out a new language, meet with a passionate discussion group or revisit your favorite areas of study. These volunteer-based academic cooperatives offer more than 970 courses each year, with no grades or exams and no educational prerequisites.

See page 37 for details.

Over-60 tuition-free programs for matriculated Delaware residents

If you are a Delaware resident age 60 or older, you may pursue a University of Delaware degree without paying tuition. You must apply and be accepted (matriculated) to qualify. Visit pcs.udel.edu/60-tuition-free-degree.

Need more information? Contact the Professional and Continuing Studies ACCESS Center at access-advise@udel.edu or 302-831-8843.

Customized learning and community partnerships

The University of Delaware provides customized programs designed to help your business or organization achieve its training and employee development goals. Professional coaching, executive education and customized training programs are tailored to your organization's needs and can be delivered online, on-site or on campus.

Customized training

We design and deliver customized training and executive education programs that meet the specific needs of your organization. We utilize the advanced expertise and experience of University of Delaware faculty and external subject matter experts to provide exceptional learning opportunities for your team.

Comprehensive instructional design and course delivery solutions

Our strong knowledge of instructional design techniques, technology applications and adult learning styles enables our educators to produce and deliver classroom-based and online programs tailored to your needs.

Professional executive coaching

We help organizations develop employee strengths, address challenges, improve productivity and increase job satisfaction. We will design new or enhance your existing coaching programs, including executive-level services.

Benefits to your organization

Outsourcing your organization's professional development to UD enables your employees to focus their efforts on core business issues that affect your bottom line.

Other benefits include:

- Strengthening your workforce through proven leadership programs.
- Optimizing work processes with project management and occupational safety programs.
- Improving relationships through diversity, teamwork and communications programs.

Professional development programs and courses

UD PCS offers a variety of ways for you to build your credentials and move ahead in your career. Certificate programs, seminars, conferences and short courses provide you with practical knowledge and skills as well as resume-building credentials. Our faculty and adjunct instructors combine strong academic backgrounds with extensive real-world experience. Programs include:

- **Business & IT**—Business Analysis, Data Analytics, Design Thinking, Digital Marketing, Management Essentials for Emerging Leaders, Microsoft Excel, Project Management, Nonprofit Management, Social Media Marketing, Web Developer Coding
- **Drone & Infrared Training**—Professional Drone Pilot Training, Infrared Training
- **Engineering and Science**—Application of Emerging Data Techniques in Railway Maintenance
- **Food and Hospitality**—Beginner's Art and Science of Cheese Making, HR Competencies for Restaurant Managers
- **Healthcare**—Advanced Telehealth Coordinator, Clinical Trials Management, Dental Symposium, Eastern Shore Medical Symposium, Medical Aspects of Sports, RN Refresher
- **Law**—Paralegal, Advanced Paralegal Seminar Series, LSAT Prep
- **Pre-College**—UD Dual Enrollment, SAT/ACT Prep, Reading/Speed Reading
- **Safety**—COSS (Certified Occupational Safety Specialist), COSM (Certificate for Occupational Safety Managers), Safe Supervisor
- **Test Preparation**—ACT, GMAT, GRE, LSAT, SAT, PMP®, CAPM®, Praxis

See pages 3–27 for complete program listings.

Online learning opportunities through UD Online

More than 240 University of Delaware credit courses—as well as 26 degree programs, certificate programs or professional development programs—are offered online, and more are developed every year. Ranging from an online Associate in Arts to an online MBA or M.S. in mechanical engineering, online programs from the University of Delaware are ideal solutions for students and professionals seeking to advance their education while accommodating their busy schedules. See pages 28–32 for program listings.

Business and IT programs

FREE INFORMATION SESSION

Wednesday, January 15
6–8 p.m.

The Tower at STAR
100 Discovery Blvd.,
Newark, Del.

**Advanced Social Media
Marketing for Business**

**Advanced Telehealth Coordinator
Certificate (online)**

**Analytics: Optimizing Big Data
Certificate**

Business Analysis Certificate

**Clinical Trials Management
Certificate (online)**

**Coding Bootcamp—
.NET/C# or Java**

Design Thinking Workshop

Digital Marketing Short Courses

Infrared Training

**Management Essentials for
Emerging Leaders**

**Microsoft® Excel Essentials and
Advanced Concepts**

Paralegal Institute

**Professional Drone Pilot Training
Academy**

Project Management Certificate

Professional Safety Training Institute

*Attendance and refreshments are free.
RSVPs are requested.*

pcs.udel.edu/info-session

CERTIFICATE PROGRAM | IN-CLASS

Analytics: Optimizing Big Data Certificate

Use data-supported solutions for improving business performance

In today's business world, data is easier than ever to collect and store. But it's the analysis of the volume, velocity and variety of big data that provides managers with knowledge that can be translated into effective decision-making and improved business performance. This certificate program brings together statistics, analysis and both written and oral communication skills through an applied approach, providing participants with the tools to join the rapidly growing data analytics field.

WHO SHOULD PARTICIPATE?

- Business, marketing and operations managers
- Data analysts or professionals in any field who deal with large amounts of data
- Financial industry professionals

SCHEDULE: Mondays, February 17–
May 18, 2020, 6–9:15 p.m.

LOCATION: Arsht Hall, 2700 Pennsylvania Ave.,
Wilmington, Del.

PRICE: \$2,895, course materials included.
Discounts and financial assistance
options available.

pcs.udel.edu/data

CERTIFICATE PROGRAM | IN-CLASS

Business Analysis Certificate

Bridging the business/IT divide

A business analyst bridges the “understanding gap” between an organization and its technology, functioning as a type of translator who converts business needs into measurable IT requirements and solutions. To succeed in this role, the business analyst must have a broad range of business, technical and interpersonal skills, including being able to effectively write and review detailed functional specifications as well as develop and test systems based on those requirements.

WHO SHOULD PARTICIPATE?

- IT professionals new to business analysis
- Employees currently working in or interested in moving to a position in which business analysis skills would be useful

SCHEDULE:

Business Analysis Module 1:
Foundations of Business Analysis
Tuesday, February 11 and
Wednesday, February 12, 2020

Business Analysis Module 2:
Eliciting and Documenting Requirements
Tuesday, March 3 and
Wednesday, March 4, 2020

Business Analysis Module 3:
Requirements Analysis and
Design Definition
Tuesday, April 14 and
Wednesday, April 15, 2020

Business Analysis Module 4:
Solution Deployment and Evaluation
Tuesday, May 12 and
Wednesday, May 13, 2020

All classes are scheduled from 8:30 a.m. to
4:30 p.m.

LOCATION: 501 S. College Ave., Newark, Del.

PRICE: \$995 per module; course materials
and daily lunch included. Discounts and
financial assistance options available.

Save \$600 and become eligible to earn a University of Delaware Certificate of Completion by registering for all four Business Analysis modules at the same time. Offered at a bundled rate of \$3,380, this equates to more than a 15% discount versus registering for each module individually.

pcs.udel.edu/business-analysis

ONLINE

Coding Bootcamps—.NET/C# or Java

Step up to a coding career!

Coding bootcamps put you on a fast track to a programming career. By receiving immersive training on a compressed schedule, you can speed your way to project-ready skills. Not everyone can reserve three or more months for nonstop training, so UD PCS, in conjunction with The Software Guild, offers Coding Bootcamp Badges. We help you master .NET/C# or Java—one skill set at a time. Our Coding Bootcamp Badges offer an affordable, flexible way to learn software development. Learn in stages, when you want, and where you want.

WHO SHOULD PARTICIPATE?

- Recent college graduates
- Professionals embarking on a new career
- Gamers
- Problem-solvers

SCHEDULE: Classes start monthly.

LOCATION: Online

PRICE: \$10,000 for all four badges, or \$2,000 to \$3,000 per badge
Discounts available

pcs.udel.edu/coding-bootcamp

CERTIFICATE PROGRAM | HYBRID-ONLINE

Business Essentials Certificate

Undergraduate credit certificate program focused on business essentials for non-business professionals. See page 29.

SHORT COURSE | IN-CLASS

Design Thinking Workshop

Design thinking is an iterative process in which we seek to understand the user, challenge assumptions and redefine problems in an attempt to identify alternative strategies and solutions that might not be instantly apparent with our initial level of understanding. At the same time, design thinking provides a solution-based approach to solving problems by embracing creativity techniques, customer co-creation and experimental design. It is a way of thinking and working as well as a collection of hands-on methods.

Immerse yourself in the value of design thinking with this two-day workshop that covers the framework, the mindsets and proven techniques you can use to achieve superior solutions to the problems of your business. Gain hands-on experience with the tools and templates via a real design thinking challenge that focuses on a common user experience problem. This training is meant for aspiring design thinkers, existing practitioners and executives seeking to incorporate design- and human-centricity into company strategy in order to optimize customers' and employees' experiences with their company/solution/product/brand.

SCHEDULE: Tuesday and Wednesday,
April 7 and 8, 2020, 8:30 a.m.–4:30 p.m.

LOCATION: 501 S. College Ave., Newark, Del.

PRICE: \$1,495, course materials included.
Discounts and financial assistance options available.

pcs.udel.edu/design-thinking

DIGITAL MARKETING

The Digital Marketing short courses are designed for anyone involved in the planning, implementation or measurement of digital marketing strategies or who would like to pursue a career in these areas. Each module offers a strategic introduction to all of the core digital marketing disciplines. Upon completion of each module, participants will be prepared to undertake specialized digital marketing roles within their organization, as well as have a thorough grasp of the subject matter to pursue advanced courses.

Participants can choose to enroll in any of the modules for professional development purposes.

SHORT COURSE | IN-CLASS

Fundamentals of Social Media Marketing

In today's changing landscape, organizations need effective social media marketing strategies to reach their full potential. This program introduces students to leveraging social media platforms to build and extend brand awareness, increase visibility, engage current and potential customers, cultivate brand ambassadors, gain customers, and support organizational goals.

Students will learn the fundamentals and best practices for using social media for marketing on current and emerging platforms, including monitoring and listening, audience engagement, content curation, campaign planning and execution, tools and resources, and measuring results.

Platforms covered include Facebook, Twitter, LinkedIn, Instagram, Snapchat, YouTube and Pinterest. Participants will learn to:

- Understand the fundamentals of content marketing and how to leverage social influence to support organizational goals for communications, marketing, public relations, customer service, leads, sales and human resources
- Discern and evaluate various social media platforms' scope, audiences and usage benefits and risks, and which to include in an organization's marketing goals

- Utilize features on different social platforms
- Participate effectively and ethically on social platforms using current compliance, regulations and legal best practices
- Identify best practices for managing social media platforms and tactics for increasing audience engagement
- Employ specific writing tactics to create concise, persuasive content that supports communications and marketing objectives
- Evaluate and employ social media tools to curate and schedule content distribution, and monitor conversations and trends

SCHEDULE: Tuesdays and Wednesdays, February 18–26, 2020, 6–9:30 p.m.

LOCATION: 501 S. College Ave., Newark, Del.

PRICE: \$795

pcs.udel.edu/digital-marketing

SHORT COURSE | IN-CLASS

Search Engine Optimization

Learn the fundamentals of SEO and how search engines work in this informative module. Garner a better understanding of why it is vital to align SEO objectives with overarching business objectives and how to use keywords and competitor research to build an effective SEO content plan. Participants will learn to:

- Distinguish between paid/organic search
- Differentiate the key components of SEO
- Recognize how search engines work
- Evaluate different types of search queries
- Identify components of a SERP
- Discern and create SEO objectives
- Evaluate short tail and long tail keywords
- Conduct keyword research
- Leverage keywords for SEO content
- Configure technical components of a website for best visibility in search engines
- Optimize on- and off-page elements to improve rankings
- Conduct SEO audit to optimize technical, on- and off-page components
- Differentiate between types of SEO metrics

SCHEDULE: Wednesdays and Thursdays, March 25–April 2, 2020, 6–9:30 p.m.

LOCATION: 501 S. College Ave., Newark, Del.

PRICE: \$795

pcs.udel.edu/digital-marketing

SHORT COURSE | IN-CLASS

Pay Per Click Digital Advertising

The PPC module covers the fundamentals of paid search and demonstrates how to implement and manage paid search campaigns using Google Ads. Learn key concepts underpinning bid auctions, managing paid ad budgets and optimizing paid search campaigns. Participants will:

- Learn how consumers use search engines
- Understand best practices for structuring a Google Ads account
- Identify key elements of a Google Ads account
- Distinguish between keyword research for paid search and SEO campaigns
- Utilize an advertising budget using Google Ads
- Recognize key concepts underlying the bidding process
- Optimize paid search campaigns
- Identify appropriate KPIs
- Understand conversion tracking
- Distinguish between the key metrics for measuring the success of a paid search campaign

SCHEDULE: Wednesdays and Thursdays, May 6–14, 2020, 6–9:30 p.m.

LOCATION: 501 S. College Ave., Newark, Del.

PRICE: \$795

pcs.udel.edu/digital-marketing

SHORT COURSES | IN-CLASS

Management Essentials for Emerging Leaders

Through this series of short courses focused on management topics, we aim to provide flexible, affordable and high-quality professional development opportunities for new or aspiring managers and leaders. These courses address the critical need for better soft skills development, while pairing the complementary technical skills emerging leaders need to manage more efficiently.

SCHEDULE:

Module 1: Fundamentals of Managing People
Thursdays, February 13–27, 2020

Module 2: Fostering Relationships and Leading Effective Teams
Thursdays, March 12–26, 2020

Module 3: Foundations of Finance and Accounting

Thursdays, April 9–23, 2020

Module 4: Negotiating and Resolving Conflict with Others

Thursdays, April 30–May 14, 2020

All classes are scheduled from 6–9:30 p.m.

LOCATION: 501 S. College Ave., Newark, Del.

PRICE: \$749 per module; course materials included. Discounts and financial assistance options available.

pcs.udel.edu/emerging-leaders

DEGREE | ONLINE

Master of Arts in Strategic Communication (M.A.)

An online graduate degree focused on professionals who wish to advance in their current career or take on new roles in strategic communication, public relations, digital media or social media management. See page 29.



YALE BUSINESS ANALYST BENEFITS FROM UD PCS PROGRAM

By Adam S. Kamras

University-backed curriculum

As part of her transition to a business analyst role at Yale University, Jessica Foote was tasked with finding a training program to assist her and her newly formed unit. Following extensive research of the options, Foote and one of her coworkers decided to make four monthly train trips from Connecticut to the First State to participate in the Business Analysis Certificate series offered by the University of Delaware's Division of Professional and Continuing Studies (UD PCS).

"I found a few programs, but I couldn't tell anything about the companies offering them," said Foote. "They had great marketing websites, but does that mean they are actually going to deliver? That fact that this was offered by a university really made me confident I was going to get a quality education."

In-person modules

Realizing she learns better in a classroom, Foote knew online courses were not for her since she wanted to be able to ask questions and interact with an instructor and other students in person. She was also attracted to the four, two-day module format that enabled her to receive digestible amounts of material she could incrementally apply back at Yale and monitor the results of.

"Although it increased the amount of travel required, I couldn't imagine trying to learn all of this in a week," said Foote. "I would have come back swimming in a sea of information and not have been able to parse any of it out."

Relevant to many fields

The International Institute of Business Analysis™ (IIBA®) describes business analysis as the practice of enabling change in an organizational context by defining needs and recommending

solutions that deliver value to stakeholders. Though there are many people serving as business analysts, one does not need to have the official job title to function in this role.

"Business analysis can be practiced at any level of an organization in almost any capacity and industry," said Peter Johnson, UD PCS instructor. "It is not just done by someone in information technology or on a project team."

Foote appreciated Johnson's teaching style, which consists of lecture and discussion. With classmates from various fields and industries, she enjoyed hearing about the similarities and differences of everyone's experiences and having the opportunity to play off each other.

Applicable lessons

While in the midst of the UD program, Foote utilized the data diagrams she had learned about to help kickstart a project at Yale. By being able to organize the information and put it down on paper and visualize it, she was able to greatly aid in the launch of the initiative.

"People more or less liked what I was doing before I took these classes; now, they are asking me to help run their sessions," said Foote. "I'm really proud that by applying what I learned, I'm creating demand for my own skills."

Though the modules build on each other, participants can enroll in the series at any point and still benefit from the lessons. Students who register for all four modules in a single transaction will qualify for a bundled rate and be eligible to earn a University of Delaware Certificate of Completion.

"I felt like business analysis was a good fit for me, and this program has confirmed it," said Foote. "Whether you are taking one module or all modules, you will learn something you can apply immediately."



CINDY DOLAN

MICROSOFT® EXCEL

Regardless of your role in an office, there is a good chance you need to be proficient in the use of Microsoft Excel. With more than 2 million recent employment postings requiring Microsoft Excel ability, it is one of the most in-demand occupational skills. The software's broad range of applications can be utilized for everything from simple number-crunching to complex business decisions. Our new foundational and advanced classes are designed to equip you with the skills needed in today's job market.

COURSE | IN-CLASS

Microsoft® Excel Essentials

Gain the foundational skill set needed to navigate throughout the Microsoft Excel application with confidence and acquire familiarity with Excel's data management capabilities. Learn to summarize datasets and prepare a workbook for distribution on a professional level.

WHO SHOULD PARTICIPATE?

- Students, recent graduates and other job seekers who are looking to add marketable skills to their resumes
- Anyone wishing to learn the fundamental operations of Excel

SCHEDULE: Tuesdays, March 3–24, 2020, 6–9 p.m.

LOCATION: 501 S. College Ave., Newark, Del.

PRICE: \$475, course materials included.
Please bring your laptop.

pcs.udel.edu/ms-excel

COURSE | IN-CLASS

Microsoft® Excel Advanced Concepts

Gain the skill set needed to work with complex datasets using advanced functions and formulas in Microsoft Excel. Learn to present data insights using advanced charting techniques, set up forms for collaborative workplace projects, and prepare interactive pivot tables for distribution on a professional level.

WHO SHOULD PARTICIPATE?

- Students, recent graduates and other job seekers with Excel skills who wish to learn advanced Excel concepts

SCHEDULE: Tuesdays, April 7–28, 2020, 6–9 p.m.

LOCATION: 501 S. College Ave., Newark, Del.

PRICE: \$475, course materials included.
Please bring your laptop.

pcs.udel.edu/ms-excel

COURSE | IN-CLASS

Microsoft® Excel Advanced Reporting and Analytics

Gain the advanced skills for creating interactive dashboard reports and data visualizations in Microsoft Excel by using the capabilities of Power View, Power Pivot and DAX formulas. Focus expands from traditional pivot tables to state-of-the-art Power Pivot data modeling. Students will be able to apply these techniques immediately in their place of work.

WHO SHOULD PARTICIPATE?

- Students, recent graduates and other job seekers with Excel skills who wish to learn advanced Excel reporting and analytics

SCHEDULE: Tuesdays, May 5–26, 2020, 6–9:15 p.m.

LOCATION: 501 S. College Ave., Newark, Del.

PRICE: \$625, course materials included.
Please bring your laptop.

pcs.udel.edu/ms-excel

CERTIFICATE | IN-CLASS

NEW! Nonprofit Management Certificate

Designed for staff and board members of small- to mid-sized nonprofit organizations, the Nonprofit Management Certificate program provides training for nonprofit leaders wishing to manage their organizations efficiently and effectively. Taught by accomplished trainers in the nonprofit sector, this course allows participants to develop action plans for their organizations

while also providing a valuable peer-to-peer networking opportunity. Topics include:

- Organizational assessment and strategy
- Financial management
- Fundraising and marketing
- Strategic technology planning
- Leadership in nonprofit organizations
- Board governance
- HR management, employment law
- Program management and decision making
- Volunteer management
- Advocacy and conflict resolution
- Leadership succession planning

WHO SHOULD PARTICIPATE?

- Executives, mid-level managers and program managers of nonprofit organizations
- Managers transitioning to the nonprofit sector from other sectors

SCHEDULE: Thursdays, February 13–May 28, 2020, 8:30 a.m.–4:30 p.m.

LOCATION: 100 West 10th Street, Community Service Building, Suite 812, Wilmington, DE 19801

PRICE: \$2,495. Discounts and financial assistance options available. Package pricing available for organizations who send more than one person from their leadership team.

pcs.udel.edu/nonprofit-management

CERTIFICATE PROGRAM | IN-CLASS

Project Management Certificate

Learn project management best practices and theories

Successful companies and organizations in every sector use project management to achieve breakthrough results. The powerful and versatile tools of project management are transferable to any work environment and can be used to manage any project.

This new curriculum applies PMBOK® (*A Guide to the Project Management Body of Knowledge*®) Sixth Edition principles as well as the new *Agile Practice Guide* with its focus on change management to assist you in attaining the Project Management Institute's (PMI)® Project Management Professional (PMP)® designation.

WHO SHOULD PARTICIPATE?

- Newly promoted or aspiring project managers
- Project leaders interested in achieving the next level of management skills
- Project managers seeking entry into the Project Management Institute's PMP® certification process

SCHEDULE/LOCATIONS:

Wilmington: Wednesdays, February 5–April 8, 2020, 6–9:30 p.m.; Arsht Hall, 2700 Pennsylvania Ave., Wilmington, Del.

Newark: Mondays, March 16–May 18, 2020, 6–9:30 p.m.; 501 S. College Ave., Newark, Del.

PRICE: \$2,595, textbooks included. Discounts and financial assistance options available.



This certificate is a great starting point for attaining the Project Management Institute's (PMI)® Project Management Professional (PMP)® designation. This program meets the education requirement for the Project Management Institute (PMI)® credential. The University of Delaware is a Registered Education Provider with the Project Management Institute (PMI)®. The PMI Registered Education Provider logo is a registered mark of the Project Management Institute, Inc.

pcs.udel.edu/project

COURSE | IN-CLASS

PMP®/CAPM® Exam Prep: Project Management Professional® (PMP)/Certified Associate in Project Management® (CAPM) Exam Prep

An intensive two-day combined exam preparation course concentrating on preparation for two levels of Project Management Institute (PMI®) certifications:

- Certified Associate in Project Management (CAPM®) examination
- Project Management Professional (PMP®) examination

Focus is on the knowledge areas documented in the *PMI® A Guide to the*

Project Management Body of Knowledge, Sixth Edition and the Agile Practice Guide.

SCHEDULE: Tuesdays and Thursdays, March 3–12, 2020, 6–9:30 p.m.

LOCATION: 501 S. College Ave., Newark, Del.

PRICE: \$995, textbooks included. Discounts and financial assistance options available.

pcs.udel.edu/project-exam-prep

CERTIFICATE PROGRAM | ONLINE

Advanced Social Media Marketing for Business Certificate

In today's digital world, brands, businesses and organizations are turning to social media for advertising, customer service, human resources, market research, revenue growth and more. There are audiences to be engaged, communities to be managed, influencers and advocates to be guided, content to create, ad strategies to be developed, profiles to be optimized, and an assorted laundry list of daily tasks that need to be addressed.

Taught by distinguished social media marketing expert Nancy Dibert, UD's Advanced Social Media Marketing for Business Certificate course teaches students with fundamental to mid-level social media marketing skills to effectively and successfully leverage the power of social media to support organizational goals.

By working in teams with nonprofit organizations, students get in-depth, hands-on experience to research, plan, develop, integrate, execute and analyze the outcomes of comprehensive social media marketing strategies, integrated campaigns, targeted content and paid placement.

Students master skills to drive engagement through targeted, innovative social media marketing campaigns, gaining firsthand experience with industry standard tools such as Sprout Social and Rival IQ. Class members learn methodologies for creating, executing and evaluating goal-oriented social media marketing strategies across multiple social media platforms.

Classes include online lectures, multimedia demonstrations, detailed content and

examples, case studies, open online discussions, and testimonials from businesses successfully using social media marketing. Past guest speakers have included industry experts Jason Falls and Samantha Toscano.

This class offers dynamic, interactive, fast-paced and highly engaging content to ensure participants are ready to take on today's social media landscape. Students will have until Sunday to complete each week's assignments while collaborating and working on the group project. Plan to allocate eight to 12 hours per week toward this program.

WHO SHOULD PARTICIPATE?

- Aspiring and current social media managers
- Marketing and communication professionals
- Consultants
- Nonprofit employees and volunteers
- Business owners
- Anyone looking to start a social media marketing business

SCHEDULE: February 10–May 18, 2020 (self-paced online course with weekly scheduled assignments and deadlines)

LOCATION: Online sessions

PRICE: \$2,995. Discounts and financial assistance options available.

pcs.udel.edu/socialmedia

COURSE | ONLINE

Socially Responsible and Sustainable Business Short Courses

Short online, self-paced courses addressing **human trafficking, human rights, labor and environmental problems in the global supply chain** for the apparel, textile, footwear and supply chain industries. See page 32.

Drone and Infrared Training programs

PROFESSIONAL DRONE PILOT TRAINING ACADEMY

The award-winning UD PCS drone training programs provide in-demand, multifaceted training at the best possible value. Our high-demand drone training offerings provide comprehensive unmanned aerial systems (sUAS) training to drone novices and advanced users alike. Whether you are a beginner who is seeking FAA Part 107 remote pilot certification, an advanced pilot responsible for lifesaving tactical missions, or an engineer looking for more efficient surveying and inspection techniques, we have a course that fits your needs and skill level. Designed to be completed over a single weekend, the courses provide industry-leading instruction and feature highly qualified sUAS experts with extensive flight experience in practical applications.

FOUNDATIONAL CLASSES

COURSE | IN-CLASS

Professional Drone Pilot: Ground School and FAA Part 107 Test Prep

Are you certified?

Legally flying a drone for commercial use requires an FAA Part 107 remote pilot certificate. During this intensive course, flight instructors provide comprehensive classroom training and prepare drone pilots for the Federal Aviation Administration's airman knowledge test, which must be passed to earn the certificate. Topics include regulations, airspace, weather, loading and performance, and operations.

SCHEDULE:

2-day weekend format:

Saturday, February 1–Sunday, February 2, 2020, 8:30 a.m.–5 p.m.

Saturday, June 6–Sunday, June 7, 2020, 8:30 a.m.–5 p.m.

New! Weekday evening format:

Wednesdays, March 18–April 8, 2020, 6–9 p.m.

LOCATION: 501 S. College Ave., Newark, Del.

PRICE: \$395

pcs.udel.edu/drones

COURSE | IN-CLASS

Professional Drone Pilot: Foundations of Flight

Ready to fly your drone?

Learn the basics of flying small unmanned aircraft systems (sUAS). Topics include familiarization with various aircraft and system components, basic flight planning, safe flight deck setup and operations, basic flight maneuvers, emergency procedures, autonomous flight mode options, multi-aircraft mission design, and effective programmatic record keeping. Students will become familiar with and receive individual hands-on flight time with a variety of aircraft systems, such as the DJI Mavic, DJI Phantom 4 Pro and DJI Inspire I.

SCHEDULE: Saturday, May 2 and Sunday, May 3, 2020, 8:30 a.m.–5 p.m.

LOCATION: 501 S. College Ave., Newark, Del.

PRICE: \$995

pcs.udel.edu/drones



NEW! INFRARED TRAINING CENTER AT UNIVERSITY OF DELAWARE



UD PCS is collaborating with the Infrared Training Center (ITC) to bring both handheld and sUAS (drone) infrared certification programs to Newark, Del. ITC is a worldwide industry leader in design, development and training in the field of imaging technology and analytics.

COURSE | IN-CLASS

NEW! Level I Thermography Certification Training (handheld)

This course is geared to the new infrared camera user and focuses on how thermography is used for a variety of condition-monitoring and predictive maintenance applications. Attendees completing all training course requirements and a thermography field assignment will receive a Level I Infrared Thermography Certification.

SCHEDULE: Tuesday through Friday, January 21–24, 2020, 8 a.m.–5 p.m.

LOCATION: 501 S. College Ave., Newark, Del.

PRICE: \$1,995

pcs.udel.edu/infrared-training

COURSE | IN-CLASS

NEW! sUAS Level I Thermography Certification

Designed for the small unmanned aircraft systems (sUAS) pilot who needs the background, skills and knowledge to properly capture and interpret thermal images, this course is geared to the individual or corporation wanting focused training on aerial infrared inspections and applications. Topics include infrared science, overview of popular applications, sUAS safety and how to select the proper camera and lens combination for your needs. Learn from the leaders in the industry how the cameras function, as well as how to get the best image from your camera. This course will show you the powerful application of thermography from the air and the limitless applications that surround this exciting new platform. Attendees who complete all training course requirements and a thermography field assignment will receive an sUAS level 1 Infrared Thermography Certification that is recognized by industry professionals.

SCHEDULE: Tuesday through Friday,
March 10–13, 2020, 8 a.m.–5 p.m.

LOCATION: 501 S. College Ave., Newark, Del.

PRICE: \$1,995

pcs.udel.edu/infrared-training

Customized Drone Training: Intermediate and advanced drone training programs are available through our customized on-site training for your group. Sample training topics include:

- Aerial Mapping and Inspection
- Aerial Imaging
- Night Operations and Thermal Imaging
- Matrice M210 Operator Proficiency
- D3P™ Drone Program Manager Proficiency Training

Contact us today to discuss your group's training needs.

COURSE | IN-CLASS

NEW! sUAS Level I Public Safety Thermography Certification

This four-day course is specifically designed to provide individuals in public safety departments the theoretical and practical foundations necessary for effective law enforcement, fire, hazmat, search and rescue, and emergency management small unmanned aircraft systems (sUAS) thermal operations; and corporations and public safety organizations wanting focused training on sUAS aerial IR imagery; while also covering a variety of condition-monitoring and predictive maintenance applications. This course is designed to introduce you to the world of aerial infrared thermography by describing the potential applications, equipment and camera types; business opportunities; infrared science; marketing; and report writing required to professionally enter this new and rapidly growing field. Attendees who complete all training course requirements and a thermography field assignment will receive an sUAS level 1 Infrared Thermography Certification that meets ASNT Standards for Certification.

SCHEDULE: Tuesday through Friday,
April 21–24, 2020, 8 a.m.–5 p.m.

LOCATION: 501 S. College Ave., Newark, Del.

PRICE: \$1,995

pcs.udel.edu/infrared-training



Education programs

DEGREE | HYBRID-ONLINE

Master of Arts in Economics and Entrepreneurship for Educators

Hybrid/online graduate program preparing educators teaching economic, entrepreneurial and financial literacy. See page 29.

DEGREE | ONLINE

Master of Education in Teacher Leadership

Online graduate degree program focused on equipping teachers to be leaders in the classroom and in their schools. See page 30.

DEGREE | ONLINE

Master of Education in Educational Technology (M.Ed.)

Online graduate degree designed to provide both a theoretical and a practical grounding in educational technology methods and techniques. Program content aligns with the International Society for Technology in Education (ISTE) and the Association for Educational Communications and Technology (AECT). See page 29.

DEGREE | ONLINE

Master of Education in Exceptional Children and Youth (M.Ed.)

Online graduate degree program preparing teachers to meet the academic, social and behavioral needs of students with exceptional learning needs across all grade levels. See page 30.

NEW UD PROGRAM FOCUSES ON MONTESSORI TEACHER TRAINING

There are more than 2,500 Montessori schools across the U.S., and demand is increasing for both public and private Montessori programs. With this growing demand comes a need for additional Montessori schools and teachers.

Adhering to the Montessori method of focusing on individualized learning

experiences and holistic child development, UD's new Montessori Teacher Residency (UDMTR) will be a MACTE-accredited (Montessori Accreditation Council for Teacher Education) program designed to prepare Montessori teachers through a combination of hands-on teaching, school-based coaching and professional seminars.

The program is currently seeking Montessori schools to partner with UDMTR for training opportunities, and is seeking teachers, administrators and students wishing to pursue Montessori training. The first cohort is set to launch in 2020. For more details, visit pcs.udel.edu/udmtr.



EVAN KRAPE

DEGREE | ONLINE

Master of Education in Literacy (M.Ed.)

Online graduate degree program preparing teachers for certification and career opportunities as reading or literacy specialists in their schools and districts. See page 30.

COURSE | IN-CLASS

Alternative Routes to Teacher Certification (ARTC)

ARTC offers an alternative route to traditional teacher certification in Delaware. Through ARTC, qualified individuals complete certification requirements while employed as full-time teachers via education coursework and intensive, school-based supervision and mentoring. For details, see artc.udel.edu.

COURSE | LIVE-ONLINE

Praxis Core Live-Online Test Prep

The Praxis Core Test Prep Live-Online courses (Core Math 5732 and Core Reading and Writing 5712/5722) are designed to help you improve your skills, confidence and score, all of which increase your chance of admission into the teacher preparation or certification program of your choice.

pcs.udel.edu/praxis-test-prep

Engineering and science programs

CERTIFICATE PROGRAM | ONLINE

Composite Materials Certificate

Online graduate certificate for engineers wishing to expand their knowledge of composite materials. See page 31.

CERTIFICATE PROGRAM | ONLINE

Composite Manufacturing and Engineering Certificate

Intended to provide the practicing engineer a strong foundation in the processing-structure-property relations in advanced fiber composites. See page 30.

CERTIFICATE PROGRAM | ONLINE

Graduate Certificate in Applied Bioinformatics

Online graduate certificate program aimed at working professionals in the life sciences or in the data and computational sciences who wish to gain knowledge and practical experience in bioinformatics. See page 30.

CERTIFICATE PROGRAM | ONLINE

Graduate Certificate in Biomedical Informatics and Data Science

Online graduate certificate program aimed at working professionals in the life sciences or in the data and computational sciences who wish to gain knowledge and practical experience in biomedical informatics and data science. See page 30.

CERTIFICATE PROGRAM | ONLINE

Graduate Certificate in Cybersecurity

Online graduate certificate for undergraduates in engineering, computer engineering, computer science, mathematics, physics or related disciplines. See page 31.

CERTIFICATE PROGRAM | ONLINE

Graduate Certificate in Particle Technology

Designed for engineering professionals who wish to expand their knowledge of particle technology. See page 31.

COURSE | IN-CLASS

Application of Emerging Data Techniques in Railway Maintenance

Addressing the use of data analytics (big data) in railroad data analysis, this two-day short course provides a specific emphasis on track- and equipment-related data, such as from railroad inspection vehicles and wayside inspection stations. Theories and case studies are presented to illustrate how the principles are applied. Course materials include exploratory data analysis, machine learning, kernel methods, multivariate adaptive regression splines (MARS), deep learning and neural networks, and Bayesian analysis techniques.

WHO SHOULD PARTICIPATE?

- Railroad, transit, consultant and railway industry personnel working with inspection and other forms of data
- Rail and transit maintenance officers wanting to learn improved data analysis and forecasting techniques

CONTACT: 302-831-8302

enggoutreach@udel.edu

pcs.udel.edu/big-data-railroad/workshop/

DEGREE | ONLINE

Master of Science in Cybersecurity

Online graduate degree combining research and theory with application to address today's cybersecurity issues. See page 31.

DEGREE | ONLINE

Master of Science in Electrical and Computer Engineering

Online graduate degree aimed at engineers with prior degrees in electrical, computer or mechanical engineering, or in computer science or mathematics. See page 31.

DEGREE | ONLINE

Master of Science in Mechanical Engineering (MSME)

Covers not only the foundations of solid mechanics, fluid mechanics, heat transfer and dynamics, but also allows for the choice of electives in diverse areas, including biomechanics, clean energy and environment, composite materials and manufacturing, energy-efficient mobility systems and smart cities, robotics and controls, and more. See page 31.

CERTIFICATE PROGRAM | ONLINE

Railroad Engineering Certificate

Online graduate certificate program aimed at engineering professionals wishing to expand their knowledge of railroad engineering for advancement in the railroad industry. See page 31.

Food and hospitality programs

COURSE | IN-CLASS

Art and Science of Cheese Making for Beginners

Have you ever wondered what makes cheddar a cheddar or how you could make your own mozzarella? Cheese making is an art. To create successful and delicious art, it is best to understand the science behind cheese making. Beginning with the milk, this course presents the fundamental processes of making a variety of different cheeses. Additional topics include cultures, rennet, brining, packaging, mold ripening, sanitation and regulations.

Offered by the College of Agriculture and Natural Resources, this course consists of a mix of classroom lectures and hands-on cheese making in the UDairy Creamery's Genuardi Food Innovation Lab. Suited for those with no knowledge or some general knowledge of cheese making, participants will learn:

- The fundamental steps in the cheese-making process
- Hands-on techniques making three varieties of cheese
- How milk quality, cleaning and sanitation can affect cheese

WHO SHOULD PARTICIPATE?

- Culinary, retail or hospitality industry professionals looking to expand their cheese-making knowledge
- Farmers or dairy professionals seeking to explore cheese making as a value-added product
- Cheese enthusiasts eager to learn cheese-making principles and explore hands-on cheese making

SCHEDULE: February 17–18, 2020, 8 a.m.–5 p.m.; February 19, 2020, 8 a.m.–noon

LOCATION: 501 S. College Ave., Newark, Del.

PRICE: \$749, various discounts apply

For details, visit canr.udel.edu/udairycreamery/courses or call 302-831-1364.

VA PATIENT EXPERIENCE ACADEMY MAKES HOSPITALS TRULY HOSPITABLE

By Adam S. Kamras

Delaware U.S. Sen. Tom Carper and Secretary of Veterans Affairs Robert Wilkie visited UD to hear directly from some of the architects, facilitators and participants from the VA Patient Experience Academy, a multidisciplinary collaboration between the University's College of Arts and Sciences, College of Health Sciences, Alfred Lerner College of Business and Economics' Hospitality Business Management department, and Division of Professional and Continuing Studies.



With a mission “to make hospitals truly hospitable,” the Patient Experience Academy focuses on experience and engagement addressed through a variety of learning methods, including short presentations, targeted readings, facilitated discussions and situational practice sessions. Serving 375 participants, the program began in February 2019 with VA managers comprising the first of five 25-person cohorts from the Wilmington VA Medical Center and VA primary care locations in New Jersey and Delaware.

CERTIFICATE PROGRAM | ONLINE

HR Competencies for Restaurant Managers

This dynamic online program addresses the unique human resources issues faced by restaurant managers, supervisors and staff. Developed in partnership with the Delaware Restaurant Association and taught by experts in labor law, human resources, restaurant operations and hospitality business research, this program benefits restaurant or food service general managers, supervisors and chefs, as well as anyone on the restaurant team who aspires to advance in the industry. Key topics include HR law, recruitment and retention, change leadership and organizational culture.

SCHEDULE: Spring 2020 (online course with some scheduled requirements and assignments)

PRICE: \$995, program materials included. Discounts, financial assistance available.

pcs.udel.edu/restaurant-hr



Healthcare/Health sciences programs

FREE IN-PERSON INFORMATION SESSION

**Wednesday, January 15
6–8 p.m.**

**University of Delaware
Audion, The Tower at STAR
100 Discovery Blvd.
Newark, DE 19713**

Attendance and refreshments are free.
RSVPs are requested.

pcs.udel.edu/info-session

VIRTUAL INFORMATION SESSIONS FOR ONLINE HEALTHCARE PROGRAMS

Advanced Telehealth Coordinator Online Certificate

**Tuesday, January 22
6–7 p.m. (EST)**

Clinical Trials Management Online Certificate

**Wednesday, January 23
6:30–7:30 p.m. (EST)**

Learn more about these online programs
at a virtual information session. The
sessions are free, but RSVPs are requested.

Visit pcs.udel.edu/health for details.

CERTIFICATE PROGRAM | ONLINE

Advanced Telehealth Coordinator Online Certificate

**Learn to coordinate telehealth
technologies to improve access to
healthcare specialties and services**

Telehealth initiatives hold exciting potential to address healthcare access issues from shortfalls in critical healthcare specialties and accessibility issues in underserved geographic locations. Telehealth also provides innovative ways to meet the demands of an aging population, reduce inappropriate use of emergency departments, prevent hospital readmissions, and bring care to the most appropriate setting and more. This 15-week program provides the foundations of telehealth for participants interested in utilizing it for the delivery of healthcare.

WHO SHOULD PARTICIPATE?

Clinicians and administrators from a wide variety of healthcare disciplines within behavioral and medical healthcare, including:

- Physicians, physician assistants
- Dentists, dental hygienists
- Nurses, nurse practitioners
- Health educators
- Counselors
- Social workers
- Physical therapists
- Occupational therapists
- Speech therapists
- IT professionals

SCHEDULE: February 3–May 11, 2020
(online course with some scheduled requirements and assignments)

PRICE: 1,495, program materials included.
Discounts and financial assistance
options available.

4.5 Continuing Education Units

pcs.udel.edu/telehealth

CERTIFICATE PROGRAM | ONLINE

Clinical Trials Management Online Certificate

**Prepare for diverse career
opportunities in this dynamic
and challenging field**

Opportunities in the field of clinical trials management range from the principal role of investigator to the supportive tasks surrounding regulatory compliance, scientific writing, marketing, data management and more. Employment settings include pharmaceutical, biotechnology, medical device companies, contract research, hospitals, educational institutions and independent contractors. This program covers site management, data management, U.S. regulatory and legal implications, safety and auditing, and marketing a product, including core concepts consistent with the Association of Clinical Research Professionals (ACRP) certification exams, a valuable credentialing opportunity for clinical research professionals. For exam details, including eligibility requirements, visit acrpn.net.

WHO SHOULD PARTICIPATE?

- Clinicians and other professionals currently involved in the clinical trials process
- Professionals with a strong science or healthcare-related background wishing to expand their knowledge in the clinical trials field

SCHEDULE: February 17–May 18, 2020
(online course with some scheduled requirements and assignments)

PRICE: \$2,125, program materials included.
Discounts and financial assistance
options available.

2.0 Continuing Education Units

pcs.udel.edu/clinical-trials

CONFERENCE

Continuing Dental Education Summer Symposium

Current topics for general dentists, dental hygienists, dental assistants and dental students

The Continuing Dental Education Summer Symposium is for general dentists, dental hygienists, dental assistants and dental students seeking continuing dental education and updates in the field. Recent topics include sleep dentistry, patient safety and dental safety, pharmacology, endodontics, and new dental materials and techniques.

The program is cosponsored by Dodd Dental Laboratories and the University of Delaware's Division of Professional and Continuing Studies.

SCHEDULE: Monday–Friday, July 20–24, 2020, 8 a.m.–noon

LOCATION: Atlantic Sands Hotel and Conference Center, Rehoboth Beach, Del.

PRICE: Weekly rate is \$750 (dentists) or \$375 (dental hygienists or other team members); daily rate is \$225 (dentists) or \$100 (dental hygienists or other team members); \$80 students (weekly or daily). Registration includes program materials, online certificates of attendance and continental breakfast. Participants assume responsibility for lodging and all other meals.

pcs.udel.edu/dental

CERTIFICATE PROGRAM | ONLINE

Dietetic Internship Certificate Program

An online post-baccalaureate program for graduates of a didactic program in dietetics (DPD) meeting the internship requirement for registered dietitians. See page 32.

DEGREE | HYBRID-ONLINE

Doctor of Nursing Practice

A hybrid online and classroom-based program with post-baccalaureate and post-master's options. See page 32.

CONFERENCE

43rd Annual Eastern Shore Medical Symposium

Comprehensive coverage of current topics for physicians and other healthcare professionals

The Eastern Shore Medical Symposium combines quality education with a great location, where primary care physicians, family practitioners, advanced practice nurses and other healthcare professionals receive comprehensive updates on relevant medical topics in a relaxed, collegial atmosphere. Topics have included hypertension guidelines, heart failure, gastroenterology updates, opioid epidemic, cancer screening and prevention, immunization updates, and diabetes management.

The five-day conference is jointly provided by Sidney Kimmel Medical College at Thomas Jefferson University and the University of Delaware with promotional assistance provided by the Medical Society of Delaware. The Sidney Kimmel Medical College at Thomas Jefferson University is accredited by the ACCME to provide continuing medical education for physicians.

SCHEDULE: Monday–Friday, June 15–19, 2020, 7 a.m.–12:30 p.m.

LOCATION: Rehoboth Beach Convention Center, Rehoboth Beach, Del.

PRICE: Registration includes course materials on a flash drive, online certificates of attendance and daily continental breakfast. Participants assume responsibility for lodging and all other meals. Physicians and faculty: \$795; retired physicians: \$755; previous participant bringing a first-time participant: \$695; nurses (professional, practitioner, case manager) and physician assistants: \$695; residents: \$520.

pcs.udel.edu/esms

CONFERENCE

51st Annual Medical Aspects of Sports Seminar

Successful prevention, evaluation and rehabilitation of sports injuries

This one-day sports medicine conference covers topics related to the evaluation and rehabilitation of sports-related injuries to the upper and lower extremities. This program is recommended for physical therapists, team and family physicians, athletic trainers, coaches, fitness club personnel, and students or school personnel involved in physical education, recreation and physical fitness programs.

Presenters include faculty and athletic training experts from the University of Delaware as well as expert practitioners from the region.

Cosponsored by the University of Delaware Intercollegiate Athletics Program and Department of Kinesiology and Applied Physiology.

SCHEDULE: Saturday, February 29, 2020, 7 a.m.–4:15 p.m.

LOCATION: University of Delaware Audion, The Tower at STAR

PRICE: \$215; student rate and two or more group discount available. Event registration includes all program materials, refreshments and lunch.

pcs.udel.edu/sports

CERTIFICATE PROGRAM | HYBRID-ONLINE

Molecular Diagnostics Certificate

Hybrid-online plus campus-based certificate program designed for medical laboratory scientists working in the clinical laboratory or in the fields of forensics, biotechnology and pharmaceuticals. See page 32.

COURSE | ONLINE

RN Refresher Online Course

Update your nursing knowledge and skills to enhance your nursing practice and meet professional requirements

Have you been out of active nursing practice? Do you wish to update your nursing knowledge and return to a clinical setting? Does your State Board of Nursing require a refresher course for licensure reactivation? The University of Delaware's RN Refresher Program is designed to help you expand your nursing options.

UD's RN Refresher Program consists of:

- An online didactic component providing the latest updates in evidence-based nursing practice and patient care management through a self-study format
- A clinical component comprised of a preceptored adult medical-surgical clinical experience in an acute care facility (optional for nurses with active licenses)
- Learner support available via web, email, phone and fax

SCHEDULE: 15-week didactic component begins February 5, 2020. Clinical component immediately follows and must be completed by August 5, 2020. Application required. Please submit application early.

PRICE: \$1,150 program fee (early registration discount through Dec. 16). Textbooks not included; additional fees related to clinical and exam proctoring may apply. Discounts and financial assistance options available.

pcs.udel.edu/rn-refresher

DEGREE | ONLINE

RN to BSN Program

Online program for registered nurses wishing to earn a bachelor of science in nursing. See page 28.



MARIA ERRICO

By Nora Zelluk

The Medical Aspects of Sports Seminar celebrated the program's 50th year in 2019 as well as its outgoing program director, UD's Keith Handling, associate professor of kinesiology and applied physiology. Originally participating in the inaugural event as a UD athletic training student in 1970, Handling since attended, presented or directed the event every year except for two years while serving in the Navy.

Sharing knowledge in the field

"From the beginning, the Medical Aspects of Sports seminar was conceived as an outreach opportunity for UD students, faculty and athletic trainers to share their knowledge," said Handling. "UD's athletic training education program has always stressed the importance of continuing education and lifelong learning in our field, emphasizing that as practitioners we need to be continually involved in keeping pace with advances in research and practice."

UD's Dan Watson, associate director of athletics for athletic training and head athletic trainer (and one of Handling's students), is the new seminar director. Like Handling, Watson emphasizes the seminar's ongoing outreach mission and the role of mentorship and continuity in UD's athletic training education program.

Showcasing UD and regional expertise

"This program allows us to showcase the talent we have on campus, especially from UD's athletic training and physical therapy programs, as well as local and regional experts, including our UD alumni who are involved in the field and bring back their experiences," said Watson. "We're always motivated to hear about the research and practical insights from our colleagues in the field."



MARIA ERRICO

Two of last year's presenters are UD alums currently serving as athletic trainers and physical therapists with NFL teams, Jon Boone (Miami Dolphins) and Steve Feldman (Philadelphia Eagles).

The Medical Aspects of Sports Seminar is co-sponsored by UD's Intercollegiate Athletics Program and the College of Health Sciences' Department of Kinesiology and Applied Physiology, held in partnership with UD's Division of Professional and Continuing Studies. This year's event is set for Feb. 29. For more details, visit pcs.udel.edu/sports.

AMBRE ALEXANDER

CONTINUALLY LEARNING/ MAKING A DIFFERENCE

Brian Galbreath

RN Refresher Online program

“After serving several years in law enforcement on active duty in the U.S. Army, my wife encouraged me to pursue a career in nursing. Since graduating from UD’s nursing program in 1998, I have worked in many different healthcare settings, including leadership positions.

In my present role as a nurse analyst for the Delaware Department of Justice, I love what I do because it allows me to combine my investigative background, nursing experience and knowledge of the healthcare system to try to make a difference. As a nurse at the bedside, we advocate for our patients. In my present position, I work as part of a team dedicated to protecting Delaware’s elderly and most vulnerable populations.

I feel very strongly about the importance of continually furthering my education. I have always considered myself a student and enjoy working in a profession that allows me to learn something new every day.”

Brian K. Galbreath, RN, BSN, CLNC, is a UD nursing alumnus, legal nurse consultant and nurse analyst with the Delaware Department of Justice. He has completed four UD Professional and Continuing Studies programs—RN Refresher, Healthcare Risk Management, Senior Fitness Specialist and most recently, a specialized workshop covering long-term care facility regulations.



PROGRAMS AT A GLANCE

SUBJECT	PROGRAM	DATES/TIME	LOCATION	PRICE	DELIVERY METHOD	FORMAT	PG. NO.
---------	---------	------------	----------	-------	-----------------	--------	---------

BUSINESS & IT	Analytics: Optimizing Big Data	Mon., Feb. 17–May 18, 6–9:15 p.m.	Wilmington	\$2,895	In-classroom	Certificate	3
	Business Analysis	Feb. 11–12, March 3–4, April 14–15, May 12–13 8:30 a.m.–4:30 p.m.	Newark	\$995/module or \$3,380/certificate bundle	In-classroom	Certificate	3
	Business Essentials		Newark/Online		Hybrid-online	Certificate	29
	Coding Bootcamps--.NET/C# or Java	Classes start monthly	Online	\$10,000 total, or \$2,000–\$3,000/badge	Online	Badge/Certificate	4
	Design Thinking Workshop	April 7–8, 8:30 a.m.–4:30 p.m.	Newark	\$1,495	In-classroom	Course	4
	Digital Marketing	Feb. 18–26, March 25–April 2, May 6–14, 6–9:30 p.m.	Newark	\$795/module	In-classroom	Short Courses	4
	Management Essentials for Emerging Leaders	Feb. 13–27, March 12–26, April 9–23, April 30–May 14 6–9:30 p.m.	Newark	\$749/module	In-classroom	Short Courses	5
	Microsoft® Excel Essentials	Tues., March 3–24, 6–9 p.m.	Newark	\$495	In-classroom	Course	7
	Microsoft® Excel Advanced Concepts	Tues., April 7–28, 6–9 p.m.	Newark	\$475	In-classroom	Course	7
	Microsoft® Excel Advanced Reporting and Analytics	Tues., May 5–26, 6–9:15 p.m.	Newark	\$625	In-classroom	Course	7
	Master of Arts in Strategic Communication (M.A.)				Online	Degree	29
	Master of Business Administration (MBA)				Online	Degree	29
	Master of Public Administration (MPA)				Online	Degree	32
	Master of Science in Applied Statistics (M.S.)				Online	Degree	29
	Master of Science in International Business (M.S.)				Online	Degree	29
	Nonprofit Management	Thurs., Feb. 13–May 28, 8:30 a.m.–4:30 p.m.	Wilmington	\$2,495	In-classroom	Course	7
	Project Management	Mon., March 16–May 18, 6–9:30 p.m. Wed., Feb. 5–April 18, 6–9:30 p.m.	Newark Wilmington	\$2,595 \$2,595	In-classroom In-classroom	Certificate Certificate	7 7
	PMP®/CAPM® Exam Prep	Tues. and Thurs., March 3–12, 6–9:30 p.m.	Newark	\$995	In-classroom	Course	8
	Social Media Mktg. for Business: Advanced	Feb. 10–May 18	Online	\$2,995	Online	Certificate	8
	Socially Responsible and Sustainable Business	Four virtual/online classes			Online	Course	32
	Socially Responsible and Sustainable Apparel Business				Online	Certificate	29

DRONES & INFRARED TRAINING	Infrared: Level I Thermography Certification Training (handheld)	Tues.–Fri., Jan. 21–24, 8:00 a.m.–5:00 p.m.	Newark	\$1,995	In-Classroom	Course	9
	Infrared: sUAS Level I Thermography Certification	Tues.–Fri., March 10–13, 8:00 a.m.–5:00 p.m.	Newark	\$1,995	In-Classroom	Course	10
	Infrared: sUAS Level I Public Safety Thermography Certification	Tues.–Fri., April 21–24, 8:00 a.m.–5:00 p.m.	Newark	\$1,995	In-Classroom	Course	10
	Professional Drone Pilot: Ground School and FAA Part 107 Test Prep	Sat. and Sun., Feb. 1–2, or June 6–7, 8:30 a.m.–5 p.m. Wed., March 18–April 8, 6–9 p.m.	Newark	\$395	In-classroom	Course	9
	Professional Drone Pilot: Foundations of Flight	Sat. and Sun., May 2–3, 8:30 a.m.–5 p.m.	Newark	\$995	In-classroom	Course	9

EDUCATION	M.A. in Economics & Entrepreneurship for Educators		Hybrid-online			Degree	29
	M.Ed. in Educational Technology		Online			Degree	29
	M.Ed. in Exceptional Children and Youth		Online			Degree	30
	M.Ed. in Literacy		Online			Degree	30
	M.Ed. in Teacher Leadership		Online			Degree	30
	Alternative Routes to Teacher Certification (ARTC)		In-class			Course	11
	Praxis: Core Math or Reading & Writing	Visit pcs.ude.edu/praxis-test-prep for details.	Online			Course	11

ENGINEERING & SCIENCE	Application of Emerging Data Techniques in Railway Maintenance	In-Classroom	Course	12
	Composite Materials Grad. Certificate	Online	Certificate	31
	Composite Manufacturing/Engineering Certificate	Online	Certificate	30
	Graduate Certificate in Applied Bioinformatics	Online	Certificate	30
	Graduate Certificate in Biomedical Informatics and Data Science	Online	Certificate	30
	Graduate Certificate in Cybersecurity	Online	Certificate	31
	Graduate Certificate in Particle Technology	Online	Certificate	31
	M.S. in Cybersecurity	Online	Degree	31
	M.S. in Electrical and Computer Engineering	Online	Degree	31
	M.S. in Mechanical Engineering (MSME)	Online	Degree	31
FOOD & HOSPITALITY	Railroad Engineering Grad. Certificate	Online	Certificate	31
	Art and Science of Cheese Making for Beginners	Newark	Course	13
	HR Competencies for Restaurant Managers	Online	Certificate	13
	Advanced Telehealth Coordinator	Online	Certificate	14
	Clinical Trials Management	Online	Certificate	14
	Continuing Dental Education Symposium	Rehoboth Beach	Conference	15
	Dietetic Internship	Online	Certificate	32
	Doctor of Nursing Practice	Online	Degree	32
	Eastern Shore Medical Symposium	Rehoboth Beach	Conference	15
	Medical Aspects of Sports	Newark	Conference	15
HEALTHCARE & HEALTH SCIENCES	Molecular Diagnostics	Hybrid-online	Certificate	32
	RN Refresher	Online	Course	16
	RN to BSN	Online	Degree	28
	Paralegal	September 2020	Certificate	20
	Advanced Paralegal: Real Estate Law	Wilmington	In-classroom	20
	Advanced Paralegal: Elder Law and Wills	Wilmington	In-classroom	20
	Advanced Paralegal: E-filing	Wilmington	In-classroom	21
	LSAT Prep	Newark	In-classroom	27
	Certified Occupational Safety Specialist (COSS)	Newark	Course	24
	Certificate for Occupational Safety Managers (COSM)	Newark	Course	24
LAW	ACT Prep	Online	Course	27
	GRE Prep	Newark or online	Course	27
	GMAT Prep	Online	Course	27
	LSAT Prep	Newark or online	Course	27
	SAT Blitz	Milton Library Newark Newark Newark	Course Course Course	27 27 27
	Multiple live-online offerings: visit pcsudeledu/sat-test-prep for details.	Online	Course	27
	Tues./Thurs, Feb. 27–March 24, 6–9 p.m. w/ live-online offerings, pcsudeledu/gre-test-prep.	Newark or online	Course	27
	Live-online offerings: visit pcsudeledu/gre-test-prep	Online	Course	27
	Mon./Wed, Feb. 19–March 23, 6–9 p.m. w/ live-online offerings pcsudeledu/sat-test-prep	Newark or online	Course	27
	Sat., Feb. 8–29, 8:30 a.m.–12:30 p.m. Sat., Feb. 8–29, 8:30 a.m.–12:30 p.m. Sun., Feb. 16–March 8, 1–5 p.m. Sun., March 22–April 26, 1–5 p.m.	Milton Library Newark Newark Newark	Course Course Course	27 27 27 27
SAFETY	Certified Occupational Safety Specialist (COSS)	Newark	Course	24
	Certificate for Occupational Safety Managers (COSM)	Newark	Course	24
TEST PREP	ACT Prep	Online	Course	27
	GRE Prep	Newark or online	Course	27
GMAT PREP	GMAT Prep	Online	Course	27
	LSAT Prep	Newark or online	Course	27
SAT PREP	SAT Blitz	Milton Library Newark Newark Newark	Course Course Course	27 27 27 27
	Multiple live-online offerings: visit pcsudeledu/sat-test-prep for details.	Online	Course	27
	Tues./Thurs, Feb. 27–March 24, 6–9 p.m. w/ live-online offerings, pcsudeledu/gre-test-prep.	Newark or online	Course	27
	Live-online offerings: visit pcsudeledu/gre-test-prep	Online	Course	27
	Mon./Wed, Feb. 19–March 23, 6–9 p.m. w/ live-online offerings pcsudeledu/sat-test-prep	Newark or online	Course	27
	Sat., Feb. 8–29, 8:30 a.m.–12:30 p.m. Sat., Feb. 8–29, 8:30 a.m.–12:30 p.m. Sun., Feb. 16–March 8, 1–5 p.m. Sun., March 22–April 26, 1–5 p.m.	Milton Library Newark Newark Newark	Course Course Course	27 27 27 27

Law programs

LSAT TEST PREP FREE STRATEGY SESSION

Wednesday, February 5
6–7:30 p.m. • Newark, Del.

LSAT TEST PREP COURSE

Monday/Wednesday
February 19–March 23
6–9 p.m.



Students benefit from Paralegal Association memberships

UD's Division of Professional and Continuing Studies is a sponsor of the Delaware Paralegal Association (DPA) and the Delaware County Paralegal Association (DCPA). We encourage participants in UD's Paralegal Certificate program to join these associations at the student membership level. For more information, visit www.deparalegals.org (DPA) and www.delcoparalegal.org (DCPA).

PARALEGAL ASSOCIATIONS DISCOUNT



Members of the Delaware Paralegal Association and the Delaware County Paralegal Association receive a 15% discount when enrolling in our paralegal programs.

pcs.udel.edu/paralegal-institute

CERTIFICATE PROGRAM | IN-CLASS

Paralegal Certificate

Create a new career path or advance in your current position as a paralegal or legal assistant

Paralegals fill a vital role in the legal community, and for more than 40 years the University of Delaware's Paralegal Certificate program has been preparing legal assistants and paralegals in the region. Taught by a faculty of experienced attorneys, the program covers the American system of law, court systems and procedures, legal research and writing, and the major branches of law.

Professional opportunities are many and varied:

- Private law firms will continue to be the largest employers of paralegals
- Growth is expected in corporate legal departments, insurance companies, real estate and title insurance firms, and banks
- Opportunities are projected to expand in the public sector

WHO SHOULD PARTICIPATE?

- Anyone wishing to change careers
- Anyone wishing to enter the field of law and legal services
- Anyone with legal experience wishing to earn a valuable credential
- Anyone considering law school

SCHEDULE: Mondays/Wednesdays, 6–9 p.m.
Next 11-month program begins September 2020.

LOCATION: Arsht Hall, 2700 Pennsylvania Ave., Wilmington, Del.

PRICE: \$3,800, textbooks additional.
Discounts and financial assistance options available.

23.4 Continuing Education Units

pcs.udel.edu/paralegal-institute

ADVANCED PARALEGAL SEMINAR SERIES

Keep up with trending legal topics

Enhance your career through advanced education in various areas of the law. By studying targeted topics, you can gain the specialized knowledge that will increase your scope of practice and competencies and make you more effective in working with attorneys who focus on particular legal fields and specialties. These short-term courses are designed to accommodate busy professionals.

WHO SHOULD PARTICIPATE?

- Anyone working in a law firm
- Anyone working toward a legal profession
- Anyone with legal experience wishing to enhance their knowledge in the legal field

COURSE | IN-CLASS

NEW! Real Estate Law

Assisting students in mastering the elements of real property, topics include preparation and recording of deeds, rights associated with real estate ownership, elements of a real estate contract, mortgages and the financing of real estate, restrictions on land use, title insurance and title examination, real estate closing process, and tax implications of real estate transactions.

SCHEDULE: Mondays, March 9–30, 2020,
6–9 p.m.

LOCATION: Arsht Hall, 2700 Pennsylvania Ave., Wilmington, Del.

PRICE: \$475

pcs.udel.edu/paralegal-institute

COURSE | IN-CLASS

NEW! Elder Law and Wills

There are two aspects to elder law, one of the fastest growing segments in the profession: helping clients age with grace and dignity, and planning with them for the protection of their estate upon their passing. Providing paralegals with legal concepts, as well as the practical application to real-life scenarios, this course delves into both aspects. It also addresses key topics, such as powers of attorney, living wills, wills, trusts, Delaware Medical Orders for Scope of Treatment (DMOST) and Medicare and military benefits. The course also examines recent trends, including portability and QTIP trusts, pet trusts, spendthrift trusts, and the use of Medicaid to pay for long-term care.

SCHEDULE: Wednesdays, June 3–24, 2020, 6–9 p.m.

LOCATION: Arsht Hall, 2700 Pennsylvania Ave., Wilmington, Del.

PRICE: \$475

pcs.udel.edu/paralegal-institute

COURSE | IN-CLASS

RETURNING IN 2020! E-filing

This one-day course addresses federal and state e-filing systems, including CM/ECF, File & ServeXpress™, File & Serve Delaware™, and eFlex. Students will learn common e-filing terminology, document requirements and deadlines for e-filing in each court, and how to search the docket in each e-filing system. Lecture includes e-filing demonstrations, best practices, pitfalls to avoid and resources for additional training.

SCHEDULE: Fall 2020, date TBD

LOCATION: Arsht Hall, 2700 Pennsylvania Ave., Wilmington, Del.

PRICE: \$375

pcs.udel.edu/paralegal-institute

UD PCS PARALEGAL INSTITUTE SERVES FUTURE AND CURRENT LEGAL PROFESSIONALS

By Adam S. Kamras

Certificate program and seminar series offered

Complementing its long-running Paralegal Certificate Program with the introduction of the Advanced Paralegal Seminar Series, the UD PCS Paralegal Institute was recently introduced. The institute serves anyone preparing for a legal career as well as those who are established in the profession or have undertaken studies in the field.

"We take great pride in our Paralegal Certificate Program, which has produced many successful graduates over the last 41 years who not only work with attorneys and in numerous other industries, but have also used their education as a vehicle to prepare for law school," said Patricia Allen, UD PCS program coordinator. "Over the years, many of our former students have requested opportunities for further education on issues they are facing on a regular basis."

Variety of topics offered

In response to this need, the Advanced Paralegal Seminar Series has been created to provide advanced study in various areas of the law to enhance the career of anyone employed by a law firm, interested in a legal profession, or possessing legal experience and wishing to increase their knowledge in the legal field. By concentrating on targeted trending legal topics, the series focuses on enabling students to gain specialized knowledge to increase their scope of practice and competencies and make them more effective in working with attorneys who may focus on particular legal fields and specialties. Designed to accommodate busy professionals, these short-term courses launched in 2019 with offerings in Intellectual Property Law, Family Law and E-filing.

"Along with enrolling experienced legal professionals, the Advanced Paralegal Seminar Series has been attracting recent graduates of our Paralegal Certificate Program who want to keep on going with their education," said Allen.

The series resumes in 2020 with Real Estate Law in March and Elder Law and Wills in June. E-filing returns in the fall, while Legal Research and Writing is being planned for in the near future as well. Suggestions for other courses are encouraged.

Training supports growing profession

The next Paralegal Certificate Program is scheduled to commence in September.

The program covers the American system of law, court systems and procedures, and legal research and writing, and introduces the major branches of law.

According to the U.S. Bureau of Labor Statistics, employment of paralegals and legal assistants is projected to grow 15% from 2016 to 2026, much faster than the 7% average for all occupations. This equates to an increase of approximately 42,000 positions in the field. Formally trained paralegals with strong computer and database management skills should have the best job prospects.



CINDY DOLAN



Pre-college programs

UD CREDIT COURSES FOR HIGH SCHOOL STUDENTS

Individual Enrollment in UD Credit Courses

High school students interested in taking credit courses through Continuing Education are required to schedule an appointment to meet with an ACCESS Center academic advisor (see page 1). ACCESS advisors are available to answer questions, offer guidance and assistance with course selection and registration, and provide forms that need to be completed.

Advisors are available to support students throughout the process.

INTERESTED IN GETTING STARTED?

Contact the ACCESS Center to make an appointment with an advisor prior to enrolling.

302-831-8843 • pcs.udel.edu/pre-college

UD Dual Enrollment: Earn College Credits While Still in High School

Qualified Delaware high school students can concurrently earn University of Delaware and high school credits through established partnerships with local high schools. Academically qualified juniors and seniors may register for designated courses through their participating Delaware high schools and:

- Earn college credits and high school credits at the same time
- Gain experience taking college-level courses
- Take courses not available at their schools
- Enhance their college applications

Online courses are one of the options for students in UD's dual enrollment partnership program. Students may enroll in one or more of the designated online courses

offered and taught by UD faculty. Although course offerings may change, typical offerings include:

ANTH 101: Introduction to Social and Cultural Anthropology

Major ideas and areas of study in social and cultural anthropology. Use of ethnographic data and film to illustrate the anthropologist's view of societies in their sociocultural and ecological dimensions. (3 credits)

BISC 105: Human Heredity and Development

Heredity and human affairs, pedigree analysis, physical and chemical basis of heredity, heredity and environment, radiation and mutation, heredity and diseases, and birth defects. (3 credits)

BUAD 100: Introduction to Business

Survey of basic business concepts designed for non-business majors. Topics covered include understanding the business environment, management and organizational behavior, marketing, and operations management, with coverage of international business and business ethics. (3 credits)

HDFS 202: Diversity and Families

Examination of diverse families in the United States with a focus on issues of race, ethnicity, social class and gender. Emphasis is on the accelerating effects of globalization and social change. (3 credits)

NTDT 200: Nutrition Concepts

Functions and sources of nutrients, dietary adequacy, energy balance and metabolism with emphasis on health promotion. Includes weight control, evaluation of popular diets, vegetarianism, eating disorders, alcohol, and other current issues and concerns in nutrition. (3 credits)

HOW TO GET STARTED

Contact your school's guidance office to find out if your school participates in UD Dual Enrollment.

pcs.udel.edu/high-school-dual-enrollment



READING AND STUDY SKILLS PROGRAMS

UD PCS, in partnership with the Institute of Reading Development, offers reading skills programs for learners of all ages.

Fall online follow-ups are available to complement our summer reading programs for students in grade school and middle school.

UD PCS also offers various reading programs for adults, high school students and college students. Speed reading and study skills programs enable participants to double their reading speed, improve reading comprehension and learn new ways of reading and studying textbooks.

For details, visit pcs.udel.edu/reading or call the Institute of Reading Development (IRD) at 1-800-903-0162.

Summer Reading Skills Programs

Summer Reading Skills programs address the specific learning needs of readers at all ages, with instruction provided by experienced teachers. Between weekly lessons, students continue to build skills through interactive online instruction tailored to their reading level.

4-year-olds through entering third graders

Fun programs focus on phonics, word-attack skills, building comprehension, developing a love of books and reading, and becoming confident enthusiastic readers.

Entering fourth and fifth graders

Programs focus on students becoming skilled, enthusiastic readers with strong comprehension, including independent reading of enjoyable children's novels. Increased focus on textbook and nonfiction reading.

Entering 6th through 11th graders

Programs focus on building stronger readers and better students, with emphasis on increased reading speed, improved comprehension, and how to effectively read and study textbooks.

LOCATIONS: Dover, Middletown, Newark, Wilmington

SCHEDULE: Summer programs meet one day a week for five weeks. Visit the website for available sessions and sign up for notifications and a discount.

Speed Reading and Study Skills Programs

Increase your effectiveness as a reader and a student in this program designed for entering high school seniors, college students and adults. You will learn several speed reading techniques as well as comprehension, concentration and retention strategies. You will double your speed in materials ranging from novels to nonfiction, and learn how to adapt your approach based upon the type of material you're reading and your purpose as a reader. In addition, you will be able to prepare for tests efficiently without extensive rereading.

You will cut the time you spend on required reading in half, and the reading you do for pleasure will be faster and more enjoyable. Program participants receive free lifetime repeat privileges at any of the 700 universities, colleges and other locations that offer the program nationwide.

LOCATION: Newark, Del., and online

SCHEDULE: Summer program and two-weekend fall programs are available; please call the Institute of Reading Development (IRD) for dates: 1-800-903-0162.

COLLEGE TEST PREP: EARN HIGHER ACT AND SAT SCORES

Standardized tests are crucial components of the college application process. The University of Delaware partners with Educational Testing Consultants (ETC), a leader in higher education test preparation, to offer intensive programs that provide students with the tools they need to excel. A limited number of need-based scholarships are available for students enrolling in test prep programs. Varied schedules and formats available:

- Live-Online
- Summer Institute
- Weekend Blitz programs

Courses are offered in Newark, Sussex County and online. See page 27 for details.

pcs.udel.edu/sat-test-prep

ACT Live-Online Test Prep

This test prep course is an intensive program that provides students with the tools they need to excel on the ACT exam. See page 27.

SAT Test Prep

This test prep course is an intensive program that provides students with the tools they need to excel on the SAT exam. See page 27.

Safety programs

VIRTUAL INFORMATION SESSION

March 5
2–3 p.m.

Certified Occupational Safety Specialist (COSS) Course

Certificate for Occupational Safety Managers (COSM) Course

Learn more about these occupational safety programs at a free virtual information session. RSVPs are requested.

Visit pcs.udel.edu/occupational-safety for details.



PROFESSIONAL SAFETY TRAINING INSTITUTE



The University of Delaware's Division of Professional and Continuing Studies partners with the Delaware Valley Safety Council to offer training for entry-level to experienced safety professionals as well as organizational leaders focused on promoting workplace safety culture and performance excellence. All programs are taught by Authorized OSHA Outreach Trainers.

COURSE | IN-CLASS

Certified Occupational Safety Specialist (COSS)

Become a trained safety practitioner

Developed by expert safety practitioners focused on the core competencies of occupational safety and health, the Certified Occupational Safety Specialist (COSS) designation is recognized nationwide for its rigorous standards and outstanding curriculum. COSS graduates are able to teach their employees and colleagues how to work safely and eliminate the risk of fatalities and near misses—and avoid safety violations and OSHA citations.



Participants who successfully complete the program earn the nationally recognized Certified Occupational Safety Specialist (COSS) designation, which is endorsed by the American Association of Safety Councils and the American Council for Construction Education.

WHO SHOULD PARTICIPATE?

This course is designed for entry-level safety professionals as well as experienced safety practitioners wishing to stay current in the field. Safety training is applicable to a wide range of industries, including construction, manufacturing, transportation, energy and utilities, public safety and security, healthcare, food, government and human resources.

PREREQUISITE: High school diploma or equivalent.

SCHEDULE: Monday–Friday, April 20–24, August 3–7 or October 19–23, 2020, 8 a.m.–5 p.m.

LOCATION: 501 S. College Ave., Newark, Del.

PRICE: \$2,649, course materials included. UD alumni, military and GBCA discount available.*

pcs.udel.edu/coss

COURSE | IN-CLASS

Certificate for Occupational Safety Managers (COSM)

Advanced safety training for occupational safety professionals

This advanced, executive level safety program focuses on safety processes and procedures and building the safety culture to lead your company toward excellence.

Safety professionals and managers who have seen the difference training can make can take the next professional step in their careers with the COSM designation.

After completing 40 hours of training and submitting all assignments, participants will receive the COSM credential.

WHO SHOULD PARTICIPATE?

This program benefits all organizational safety leaders involved in processes and decision-making as well as other managers and professionals charged with workplace health and safety for their organizations.

PREREQUISITE: Minimum two years of safety, health or environmental work experience.

Topics covered:

- Essentials of safety management
- Safety competencies and leadership
- Management roles and responsibilities
- Strategic planning and evaluating



CUSTOMIZED TRAINING OPPORTUNITY

Safe Supervisor Training

Become a safety leader in your workplace

Achieving an injury-free workplace takes more than a catchy phrase or one individual championing the cause. Frontline supervisors play a pivotal role in shaping the safety mindset in the workforce.

Safe Supervisor Training is a three-day course designed to enhance a supervisor's understanding of the bigger picture in creating a safer work environment. By learning how to promote safety on a job site, graduates have the knowledge to help reduce fatalities, near misses and OSHA citations.

Topics covered:

- How exposures to hazards can lead to accidents
- Performance of a worksite analysis
- Recognizing hazards
- Determining potential effects of hazards
- Determining how OSHA code applies to identified hazards
- Controlling identified hazards
- Communicating hazard-related information
- Initiating an accident investigation
- Understanding some of the psychology that drives employees' "unsafe" behaviors

This course can be offered on-site or on the UD campus as a customized training program. Please contact Lynn Fishlock at 302-831-8837 or lynnafe@udel.edu to discuss group or organizational enrollments.

pcs.udel.edu/safe-supervisor

- Managing risk (hazards and analysis), safety finances and workers' compensation
- Communicating the safety message
- Presenting to high-level executives
- Injury management, incentives and discipline
- Claims and investigation in post-accident management

SCHEDULE: Monday–Friday,
September 21–25, 2020, 8 a.m.–5 p.m.

LOCATION: 501 S. College Ave., Newark, Del.

PRICE: \$2,749, course materials included.
UD alumni, military and GBCA discount available.*

pcs.udel.edu/cosm

*Contact the Delaware Valley Safety Council at 856-558-8797 or detraining@dvsconline.org to apply any discount. Only one discount may be applied per enrollment. General Building Contractors Association, Inc. (GBCA) members receive a discount when enrolling in COSS or COSM.

INDUSTRY UPDATE: SAFETY VIOLATIONS

Annual OSHA report highlights perennial safety issues

Every year, the U.S. Occupational Safety and Health Administration (OSHA) releases a list of top safety violations. The report consistently shows thousands of citations for infractions that could potentially affect job safety. Last year, the top 10 most frequently cited violations were:

1. **Fall Protection: General (6,010 violations)**
2. **Hazard Communication (3,671)**
3. **Scaffolding (2,813)**
4. **Lockout/Tagout (2,606)**
5. **Respiratory Protection (2,450)**
6. **Ladders (2,345)**
7. **Powered Industrial Trucks (2,093)**
8. **Fall Protection: Training (1,773)**
9. **Machine Guarding (1,743)**
10. **Eye and Face Protection (1,411)**

Understanding OSHA requirements is a primary focus of UD's occupational safety training courses, which emphasize recognizing hazards and effectively managing workplace safety programs.

Offered in partnership with the Delaware Valley Safety Council (DVSC), all courses are taught by authorized OSHA Outreach Trainers. For more information, visit pcs.udel.edu/occupational-safety.



GOVERNOR'S SCHOOL FOR EXCELLENCE CELEBRATES 40TH ANNIVERSARY

By Adam S. Kamras

Half of alumni enroll at UD

Forty years after participating in the inaugural Delaware Governor's School for Excellence, Delaware Lt. Gov. Bethany Hall-Long addressed the Class of 2019 and their families as well as fellow alumni who returned to the University of Delaware to celebrate the first four decades of the program.

Speaking to the latest graduates of the one-week UD residential program that brings together academically and artistically talented high school students from throughout the state, Hall-Long encouraged the students keep in touch with each other. With approximately half of all Governor's School participants later enrolling at the University of Delaware, maintaining the relationships can be quite easy to accomplish for many of them.

Lifelong friendships formed

Governor's School Class of 2007 alumna Martha-Raye Adjei still corresponds with many of the students and enjoys following their achievements on social media. Adjei, who received a bachelor's degree in environmental studies from UD in 2013, is a quality assurance specialist with SEMrush.



CINDY DOLAN

"I came to Governor's School for academics and also made lifelong friends," said Adjei. "It really taught me how to be an independent thinker. The sessions were very thought-provoking and kind of shaped my whole educational and professional experience."

Program sparks career

Andrew Paulus gives a lot of credit to his 2005 Governor's School involvement for introducing him to engineering, a field he has been working in since earning his bachelor's degree in mechanical engineering from UD in 2011.

"We took a field trip to the engineering department, did a few hands-on activities, and I said, 'This is really cool,'" said Paulus. "I enjoyed applying the lessons to various situations, and it kind of sparked me into learning more about engineering and ultimately declaring it as my major."

Alumna earns UD doctorate and job

When Teresa Rush was selected for Governor's School in 2002, she admits knowing very little about the University of Delaware at the time. Since then, she has returned to UD for two degrees and to serve as an employee.

"I believe that Governor's School motivated me to try new things and to take a chance on myself and pursue opportunities that were outside of my comfort zone," said Rush. "It absolutely played a role in my decision to attend the University of Delaware. I would not have known that the University of Delaware offered so many wonderful, nationally ranked programs."

After receiving a bachelor's degree in elementary teacher education in 2008, Rush became a teacher. She was recently awarded a doctorate in educational leadership at UD and has taken on the position of program coordinator for the University's elementary teacher education associate in arts degree.

Sponsored by the Office of the Governor of the State of Delaware in cooperation with the Delaware Department of Education and the University of Delaware's Division of Professional and Continuing Studies (UD PCS), Governor's School for Excellence has welcomed more than 4,000 students over the last 40 years.



Governor's School for Excellence alumni Andrew Paulus (left), Martha-Raye Adjei and Teresa Rush partake in a celebration of the first four decades of the program.

LANE MCLAUGHLIN

Test prep programs

TEST PREP FREE STRATEGY SESSIONS

GRE Strategy Workshop

**Tuesday, February 11
and Tuesday, May 12**
6–7:30 p.m. • Newark, Del.

LSAT Strategy Workshop

**Wednesday, February 5
and Wednesday, April 22**
6–7:30 p.m. • Newark, Del.

COURSE | IN-CLASS OR LIVE-ONLINE

College Test Preparation Courses

Intensive in-class or live-online test preparation and review tools to help you perform at your peak

Standardized tests are a crucial component of the college and graduate school application process, and success on these exams can be a big part of achieving your goals. These test prep courses are intensive programs that provide students with the tools they need to excel on these exams. Students are provided with an in-depth review of the exam materials, insight into strategies for succeeding on each exam, and a comprehensive study plan. An official study guide, a customized workbook and online resources are provided with each course. This program is offered in partnership with Educational Testing Consultants (ETC), a leader in higher education test preparation.

WHO SHOULD PARTICIPATE?

- Rising high school juniors taking the SAT or ACT for college admissions
- Undergraduates preparing to take the GRE, GMAT or LSAT for admission to graduate school or law school

- Future teachers taking the Praxis for certification or admission to colleges/schools of education
- Anyone wishing to continue their education at the college/university or graduate level

PRICE: See website for current pricing and available discounts.

LOCATION: Courses offered on UD's main campus in Newark, Del., and now in Sussex County, Del. and live-online. See website for details.

pcs.udel.edu/test-prep

ACT

(Multiple live-online offerings)

pcs.udel.edu/sat-test-prep

GRE

Tues./Thurs. February 27–March 24, 2020, 6–9 p.m.

(Multiple live-online offerings)

pcs.udel.edu/gre-test-prep

GMAT

(Multiple live-online offerings)

pcs.udel.edu/gre-test-prep/

LSAT

Mon./Wed., Feb 19–Mar 23, 2020, 6–9 p.m.

(Multiple live-online offerings)

pcs.udel.edu/lsat-test-prep

SAT

SAT BLITZ

Sat., February 8–29, 2020, 8:30 a.m.–12:30 p.m.
(Newark)

Sat., February 8–29, 2020, 8:30 a.m.–12:30 p.m.
(Milton)

Sun., February 16–March 8, 2020, 1–5 p.m.
(Newark)

Sun., March 22–April 26, 2020, 1–5 p.m.
(Newark) No class on April 12 and April 19

SAT SUMMER INSTITUTE

Mon.–Thurs., June 22–25, 2020, 9 a.m.–3 p.m.
(Newark)

Mon.–Thurs., July 6–9, 2020, 9 a.m.–3 p.m.
(Milton)

Mon.–Thurs., July 13–16, 2020, 9 a.m.–3 p.m.
(Newark)

Mon.–Thurs., July 20–23, 2020, 9 a.m.–3 p.m.
(Newark)

Mon.–Thurs., July 27–30, 2020, 9 a.m.–3 p.m.
(Newark)

Mon.–Thurs., August 3–6, 2020, 9 a.m.–3 p.m.
(Newark)

Mon.–Thurs., August 10–13, 2020, 9 a.m.–3 p.m.
(Milton)

Mon.–Thurs., August 17–20, 2020, 9 a.m.–3 p.m.
(Newark)

Discounts are available for veterans, Delaware residents, and UD students and alumni.

pcs.udel.edu/sat-test-prep

FINANCIAL AID AVAILABLE

Need-based financial aid is available for students enrolling in the ACT, SAT, GMAT, GRE or LSAT test prep programs. Applications are accepted on a rolling basis, with preference given to submissions received at least three weeks prior to the applicable course start date.

pcs.udel.edu/test-prep

OTHER EXAM PREP OFFERINGS

PMP®/CAPM® Exam Prep

See page 8 for more information.

Praxis Live-Online

See page 11 for more information.

ON-CAMPUS GRE AND PRAXIS TESTS

GRE and Praxis exams are offered in partnership with Educational Testing Service (ETS) at the Computer Based Testing Center, located on UD's main campus in Newark.

pcs.udel.edu/cbtc-standardized-testing

UD Online programs

Study with flexibility

At the University of Delaware, we offer a learning environment that is designed to help you expand your skills and further your career. We do this through discovery-based learning, applied research and dynamic skill building. This proven academic approach extends to all of our online degree programs and non-degree courses.

When you choose to study with UD, you gain access to our expert faculty and our leading-edge curriculum, all with the flexibility that comes with online learning. Online programs from the University of Delaware are ideal solutions for students and professionals who are seeking to advance critical skills with a leading research university while accommodating their busy schedules.

Explore all of these options at online.udel.edu.

University of Delaware—a top-ranked education

Take advantage of e-learning opportunities at a top-ranked, research-focused university with a wide array of programs, departments, schools and centers.

- *U.S. News and World Report* names UD #39 nationally among top public universities.
- Kiplinger's, Forbes and MONEY ranks UD among "Best Value" schools.
- The Center for World University Rankings places UD in the top 1.3% of universities in the world.

Learn more: www.udel.edu/about/facts-figures



UNDERGRADUATE DEGREES AND CERTIFICATES

Associate in Arts Online

The Associate in Arts Online is a liberal arts degree representing completion of approximately half of a UD bachelor of arts degree. Your previous college credit may be transferable into the program, and you may begin taking courses prior to formal admission to the degree. Consult with an ACCESS Center advisor to choose courses and customize your program. A UD degree is closer than you think!

CONTACT: access-advise@udel.edu
302-831-8843
pcs.udel.edu/associate-arts-online/

Bachelor of Science in Nursing (RN-to-BSN)

The University of Delaware School of Nursing's RN-to-BSN program provides licensed registered nurses the opportunity to earn their BSN degree through online study. Building on basic nursing knowledge to enhance nursing practice in an increasingly complex society, the curriculum further develops students' scholarly writing skills, leadership skills, research knowledge and use of evidence-based practice to provide a growth experience for the actively practicing registered nurse. Providing year-round learning opportunities for degree completion, courses are offered in fall, winter, spring and summer.

CONTACT: access-advise@udel.edu
302-831-8843
sites.udel.edu/nursing/nursing-education



Certificate of Business Essentials

Through a combination of online and campus courses, this certificate offers students and working professionals in non-business fields the opportunity to earn a business-related certificate. The program is comprised of four targeted courses from UD's Lerner College of Business and Economics:

- Economic Issues and Policies
- Survey of Accounting
- Introduction to Business
- Fundamentals of Finance

CONTACT: access-advise@udel.edu
302-831-8843 • pcs.udel.edu/essentials

GRADUATE DEGREES AND CERTIFICATES

BUSINESS

Master of Science in Applied Statistics

This program is designed for working professionals from a range of occupational and educational backgrounds. Students receive training in applied and theoretical statistics and graduate ready to excel in data careers.

CONTACT: 844-247-6251
onlinestats@udel.edu
onlinestats.canr.udel.edu

Master of Business Administration (MBA)

The Online MBA program allows participants to engage in thoughtful learning with outstanding faculty and students, maximizing real-world knowledge to equip them with the skills and knowledge needed to excel in today's global market. Graduates can add a powerful, AACSB-accredited MBA to their resume in as few as 16 months, with concentrations in business analytics, finance, healthcare management, international business and strategic leadership. Five start dates per year.

CONTACT: mbaprogram@udel.edu
844-237-1338 • mbaonline.udel.edu

Graduate Certificate in Socially Responsible and Sustainable Apparel Business

Addresses labor and environmental problems in global supply chains for the apparel, textile and footwear industries. Coursework is grounded on principles of the United Nations (UN) Global Compact and provides the foundation needed to manage international production, design, product development, buying, promotion and sourcing in ways that are socially responsible and sustainable.

CONTACT: 302-831-6124
hcao@udel.edu
fashion.udel.edu/graduate/graduate-certificate

Master of Science in International Business

This degree prepares professionals for leadership in international business, with emphasis on strategic, financial and managerial roles. Participants customize their program with coursework drawn from accounting, economics, finance, marketing, entrepreneurship and analytics.

CONTACT: 844-237-1338
business.online.udel.edu/msib

Master of Arts in Strategic Communication (M.A.)

By evaluating past media campaigns and their results, conducting competitive research, and designing new campaigns based on insights from student analysis, this degree focuses on the tactics necessary to craft persuasive messaging. Graduates are prepared to advance in their current career or take on new roles in strategic communication, public relations, digital media or social media management.

Students can pursue concentrations in either public relations or digital and social media as well as customize electives to design a program that best matches their career goals.

CONTACT: 844-237-1338
stratcomm.online.udel.edu

EDUCATION

Master of Arts in Economics and Entrepreneurship for Educators (M.A.E.E.E.)

This combined hybrid online plus on-campus program focuses on economic, entrepreneurial and financial literacy and on preparing educators for teaching these subjects in elementary and secondary schools. The M.A.E.E.E. equips educators with a solid foundation in economic theory and a set of strategies for teaching economics, entrepreneurship and personal finance to inspire students to become effective participants in the economy, successful entrepreneurs, responsible consumers and wise investors.

CONTACT: asarta@udel.edu
302-831-2559
lerner.udel.edu/programs/masters-programs/economics-and-entrepreneurship-for-educators-ma

Master of Education in Educational Technology (M.Ed.)

Based on the assumption that new media and the internet can have a positive effect on teaching and learning, this degree provides both a theoretical and a practical grounding in educational technology methods and techniques, emphasizing theories of teaching and learning that support these methods. To demonstrate mastery of the program's goals, all candidates complete the same series of seven program assessments. Depending on the student's career path, these assessments are evaluated by rubrics developed according to standards of the International Society for Technology in Education (ISTE) or the Association for Educational Communications and Technology (AECT).

CONTACT: 302-831-2396
education.udel.edu/masters/edtech

Questions?

Please visit online.udel.edu,
write to continuing-ed@udel.edu
or call 302-831-7600.

Master of Education in Exceptional Children and Youth (M.Ed.)

With perennial shortages in the field of special education, this program is aimed at developing teachers and education professionals committed to serving children and youth with disabilities. Concentrations are available in K-12 Special Education and Autism/Severe Disabilities. This program is appropriate for teachers with a certificate in either general or special education who wish to develop advanced knowledge and skills as well as other education professionals wishing to pursue an advanced degree in the disability field. A five-course program for Delaware teachers meets requirements for Delaware certification as a Teacher of Exceptional Children Grades K-12 or Teacher of Students with Autism or Severe Intellectual Disabilities.

CONTACT: kritchey@udel.edu
education.udel.edu/masters/exc-online

Master of Education in Literacy (M.Ed.)

This program is for K-12 teachers wishing to prepare for certification as reading or literacy specialists. Current teachers and educators will study the theoretical and evidenced foundations of reading and writing development, learn to plan culturally and linguistically relevant literacy instruction for all students, and support students and teachers in the use of digital literacy tools. Career opportunities include reading and literacy specialist positions in school districts as well as English language arts (ELA) positions in K-12 schools.

CONTACT: karchmer@udel.edu
education.udel.edu/masters/literacy



Master of Education in Teacher Leadership (M.Ed.)

Today's ever-changing educational landscape requires teachers who are equipped to be leaders in the classroom, able to foster collaboration within the school and community, and to understand and implement policies that impact students in K-12 classrooms, private schools, preschools, higher education and home schooling. This program provides teachers with the insights, knowledge and skills needed to better manage their classrooms, improve student outcomes and enhance their own professional growth as well as guide their peers toward more effective teaching strategies.

education.udel.edu/teacherleadership

ENGINEERING

Online Graduate Certificate in Applied Bioinformatics

Bioinformatics is an emerging field where biological and computational disciplines converge, leading to job opportunities in rapidly growing fields like biomedicine, pharmaceuticals, healthcare, agriculture and data analytics. This four-course program is aimed at working professionals in the life sciences or data sciences who wish to gain knowledge and practical experience in bioinformatics. Focused on real-world applications, students will learn in an interactive, experiential and multidisciplinary team environment from nationally and internationally renowned researchers and practitioners in the field. No previous programming or database experience is required, but a familiarity with molecular biology concepts is recommended.

CONTACT: bioinformatics@udel.edu
bioinformatics.udel.edu/ABNF-CERT

Online Graduate Certificate in Biomedical Informatics and Data Science

Bioinformatics is an emerging field where biological and computational disciplines converge, leading to job opportunities in rapidly expanding fields of study with applications ranging from genomics to pharmaceutical, health informatics, and biomedical research; having the potential to impact all areas of scientific research. This four-course program is aimed at working professionals in the life sciences or data sciences or as a complement to other UD degree programs who wish to gain knowledge and practical experience in fields where biomedicine, precision medicine, health informatics and data science intersect. Focused on real-world applications, students will learn in an interactive, experiential and multidisciplinary team environment from nationally and internationally renowned researchers and practitioners in the field. No previous programming or database experience is required, but a familiarity with molecular biology and statistics is recommended.

CONTACT: bioinformatics@udel.edu
bioinformatics.udel.edu/BIDS-CERT

Graduate Certificate in Composite Manufacturing and Engineering

Design rules for composite materials are fundamentally different than for traditional materials, with the engineer tailoring the material structure at the micro- and nano-scales to achieve desired mechanical and physical properties. This program is intended to provide the practicing engineer a strong foundation in the processing-structure-property relations in advanced fiber composites. UD's Center for Composite Materials and Department of Mechanical Engineering are internationally recognized as leaders in composites research and education.

CONTACT: 302-831-8302
enggoutreach@udel.edu
me.udel.edu/academics/graduate/graduate-certificate-in-composites-manufacturing-engineering

Graduate Certificate in Composite Materials

Offered by UD's Department of Mechanical Engineering and Center for Composite Materials, the Graduate Certificate Program in Composite Materials is designed for engineering and science professionals who wish to expand their knowledge of the mechanics of composite materials.

CONTACT: 302-831-8302
enggoutreach@udel.edu
me.udel.edu/academics/graduate/graduate-certificate-in-composite-materials

Graduate Certificate in Cybersecurity

As cyber-systems become more integrated into society, the impact of cyberattack increases, necessitating the need for cybersecurity research and education. The educational goals of this online graduate certificate are to impart cybersecurity best practices to professionals working in computing and related areas; provide a first step in students' pursuit of a graduate degree in cybersecurity, enabling them to become cybersecurity professionals; or serve as a first step in students' pursuit of a doctorate focused on cybersecurity.

CONTACT: 302-831-2406
ece.udel.edu/graduate/cybersecurity-certificate.html

Graduate Certificate in Particle Technology

The certificate is designed for engineering professionals working in the process industries and/or for undergraduate or graduate engineers desiring to expand their knowledge of particle technology. The objective is to equip professionals with the knowledge and ability to meet the expectations of employers in the processing industry with respect to particle technology expertise.

CONTACT: 302-831-8302
enggoutreach@udel.edu
che.udel.edu/grad/mept/GradCertPT.html

Graduate Certificate in Railroad Engineering

The railroad industry is growing and hiring qualified individuals into long-term, high-paying careers. This certificate can help participants become competitive candidates for these positions and with advancement in the field. The program prepares participants to meet railroad industry employers' expectations regarding knowledge of railroad and rail transit and is designed for engineering professionals working in the area of railroad engineering or for those desiring to expand their knowledge of railroad engineering and related engineering disciplines with the goal of advancement in the railroad industry.

CONTACT: 302-831-8302
enggoutreach@udel.edu
railroadengineering.engr.udel.edu/courses/

Master of Science in Cybersecurity

Protect your organization from malware and infiltration with an NSA- and DHS-designated National Center of Academic Excellence in Cyber Defense Education program. Learn to design, execute and evaluate secure systems and software. Gain advanced instruction in engineering secure software and systems from a faculty of experts in technology and security. This 10-course program combines research and theory with application to address today's cybersecurity issues as an in-demand specialist.

CONTACT: 302-831-2406
ece-info@udel.edu
ece.udel.edu/online/graduate/masters-in-cybersecurity-online.html

Master of Science in Electrical and Computer Engineering

Build your expertise in math, engineering and data science with a program focused on skill building across signal processing, data analytics, communication and cybersecurity to prepare you to lead solution development in data and communications. In addition to the master skill set of electrical and computer engineering, the program strongly focuses on the critical



insights you'll need to secure, protect and implement the systems you create. Developed by a faculty with diverse corporate and research backgrounds, this flexible program is for those with prior degrees in electrical, computer or mechanical engineering, or computer science or mathematics, and can be completed in as few as two years.

CONTACT: 302-831-2406
ece-info@udel.edu
ece.udel.edu/online/graduate/msece-online.html

Master of Science in Mechanical Engineering (MSME)

This online program is comprised of 30 credits covering not only the foundations of solid mechanics, fluid mechanics, heat transfer and dynamics but also allows for the choice of electives in biomechanics, clean energy and environment, composite materials and manufacturing, energy efficient mobility systems and smart cities, robotics and controls, and more. Program faculty are the same world-class, awarded faculty who teach in the full-time, campus-based program.

CONTACT: enggoutreach@udel.edu
me.udel.edu/academics/graduate/msme-online

NURSING/HEALTHCARE**Advanced Telehealth Coordinator**

Provides the foundations of telehealth for participants interested in utilizing telehealth for the delivery of healthcare. See page 14.

Clinical Trials Management

Key competencies necessary for understanding and conducting clinical trials and new product development. See page 14.

Dietetic Internship

This post-baccalaureate certificate program provides graduates of a didactic program in dietetics (DPD) with the knowledge and skills necessary to become registered dietitians with the creative problem-solving skills necessary in the field of dietetics. Upon successful completion of the program, students receive a verification of completion certificate and are eligible to take the Registration Examination for Dietitians.

CONTACT: 302-831-4989
aleef@udel.edu • udel.edu/bhan/dietetic

Doctor of Nursing Practice (DNP)

UD's Doctor of Nursing Practice program prepares graduates to perform at the highest level of advanced nursing practice. The foundation for practice expertise with a population health focus will enable the graduate to plan and lead evidence-based interventions, quality improvement strategies and health policy changes that address patient safety, promote patient-centered care and reduce health disparities among diverse groups. Three concentrations are available in a hybrid-online and on-campus format: adult-gerontology nurse practitioner, family nurse practitioner, and psychiatric mental health nurse practitioner.

CONTACT: ud-gradnursing@udel.edu
sites.udel.edu/nursing/graduate

Molecular Diagnostics Certificate

This post-baccalaureate certificate program has a hybrid-online plus on-campus format, providing medical laboratory scientists working in forensics, biotechnology or pharmaceuticals with the opportunity to update skills and knowledge to help meet the demands of modern molecular biology theory and application. The program also provides individuals seeking Molecular Biology, American Society for Clinical Pathology (MB-ASCP) certification with a solid preparation for national credentialing examinations. The three-course program is comprised of two 14-week online lectures and one weeklong campus-based laboratory practicum.

CONTACT: mms-dept@udel.edu
sites.udel.edu/mms

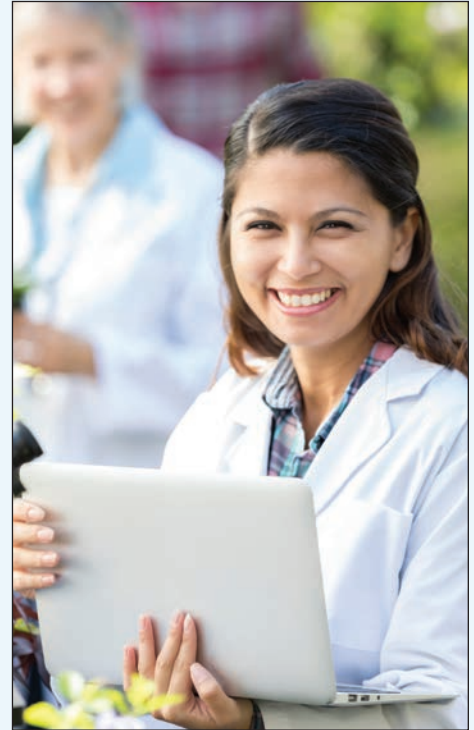
RN Refresher

Online didactic course for nurses seeking to reinstate their license; clinical component coordinated locally. See page 16.

PUBLIC ADMINISTRATION**Master of Public Administration (MPA)**

This program is designed to help public service professionals develop their knowledge of current societal issues and strengthen their administrative acumen using a curriculum based on applied research and contemporary case studies. Founded on theory, research and application-based solutions and taught by an interdisciplinary faculty, this flexible program challenges participants to apply best practices while mastering the strategies necessary to shape policy and lead effective management in government, nonprofit and private sectors.

CONTACT: 302-831-1687
bidenschool@udel.edu
bidenschool.udel.edu/masters-programs/masters-programs/mpa-master-of-public-administration

**Socially Responsible and Sustainable Business—Online Short Courses**

- Risks of Human Trafficking
- Human Rights of Workers in Supply Chains
- Textile and Apparel Product Safety
- Impact of Corporate Purchasing Practices on Workers in Supply Chains

Over 4,500 supply chain professionals from 39 countries have successfully completed one of UD's Socially Responsible and Sustainable Business short courses, and 125 companies have used a course to train their employees in industries including apparel, footwear, pharmaceutical, manufacturing, retail, biotech, food processing, jewelry, packaging, telecommunications and electronics.

CONTACT: 302-831-7600
continuing-ed@udel.edu
pcs.udel.edu/srsb

USING BUSINESS ANALYSIS to INCREASE EFFICIENCY

James Maynard

Business Analysis Certificate

“After serving in a variety of roles during my first nine years with Burris Logistics, I transitioned to a business analyst position. Since this was a new field for me, and I am in my early 40s, it was intimidating to enroll in UD’s Business Analysis Certificate program and try to learn new concepts at my age.

Fortunately, the supportive and encouraging environment set me at ease to understand the material covered. The instructor did an awesome job bridging the lectures with the discussions and allowing us to learn together through our interactions with each other. When you have an instructor you can relate to, you can be yourself and won’t feel out of place.

The program gave me a greater understanding of the technical side of being a business analyst and all I can do to help my customers be more efficient in their processes. Everything presented in every module applied to what I do at my job.”

James Maynard is a business analyst for Burris Logistics who earned a University of Delaware Certificate of Completion by completing all four modules of the Business Analysis Certificate program.



The global impact of UD PCS



Over the past 10 years, more than 180 participants from more than 80 countries have attended the **Emergency Poultry Disease Response Certificate program** sponsored by the U.S. Department of Agriculture Animal and Plant Health Inspection Service in conjunction with UD PCS.



More than 4,800 supply chain professionals from 39 countries have completed one of UD's **Socially Responsible and Sustainable Business courses** focused on human trafficking and workers' rights compliance in the apparel, footwear, pharmaceutical, manufacturing, retail, biotech, food processing, jewelry, packaging, telecommunications and electronics industries.



22 students in **India** have completed UD PCS' **Clinical Trials Management Certificate online program** through a partnership with the **Vidarbha Youth Welfare Society**.

Learners in 40-plus countries across six continents participated in UD PCS noncredit or professional development programs last year.



In partnership with Afrihealth Group, UD PCS is launching a new offering of our **Clinical Trials Management Certificate online program** with a capstone conference planned in Accra, Ghana.



Haiti Ambassador Hervé H. Denis visited UD in summer 2019 to explore potential opportunities and partnerships with UD PCS and other units. Invited to the First State by the Delaware African and Caribbean Affairs Commission and the Delaware Haitian community, the Haitian delegation engaged in discussion about potential education opportunities for a variety of topics, such as technology, healthcare, entrepreneurship, business and energy.



Global mineral and extractive supply chain professionals can now pursue UD's new **Minerals, Materials and Society graduate certificate** focusing on sustainability and social responsibility in the industry. The program features experiential learning partnerships with **Australia's University of Queensland's Sustainable Minerals Institute** and **Russia's National University of Science and Technology**.



UNIVERSITY OF DELAWARE
**PROFESSIONAL &
CONTINUING STUDIES**

A woman with short grey hair and glasses, wearing a blue t-shirt, is smiling and holding a large sea turtle shell. The t-shirt has a logo that reads "MERR INSTITUTE LEWES, DELAWARE STRANDING TEAM".

ACTIVE RETIREMENT BETTER THAN I IMAGINED

Joan Mansperger

UD Osher Lifelong Learning Institute member, Lewes

When former Navy air traffic controllers Joan Mansperger and her husband were looking for their future retirement home, their wish list included an ocean, warmer climate and continuing education opportunities. They chose Lewes, Delaware, and joined UD's OLLI program.

"Once I saw my first OLLI catalog, I was hooked—so many interesting classes I never had time for when I was working. Then I discovered I could share my knowledge and contribute to the program by teaching. In college I was a life sciences major, avid hiker and nature lover, so environmental topics have always been important to me. I've taught OLLI courses on green living, sea level rise, tree identification, weather and beachcombing.

We both volunteer for MERR, the Marine Education, Research and Rehabilitation Institute in Lewes and have frequently responded to marine mammal and sea turtle strandings, and assist with education and fundraising.

My OLLI and MERR activities have contributed to a retirement much more active and enjoyable than I could have imagined."

Joan Mansperger is an OLLI member and instructor from Lewes. She is pictured here volunteering at the MERR education table at UD's 2019 Coast Day in Lewes.

Osher Lifelong Learning Institute



Are there topics you've always been curious about but haven't had the opportunity to explore?

Do you miss playing music, creating art or diving deeper into current issues with other thoughtful adults?

It's your time to learn!

The University of Delaware is proud of its history as one of the earliest and largest lifelong learning programs in the country, hosting Osher Lifelong Learning Institute (OLLI) programs in Bridgeville, Dover, Lewes, Ocean View and Wilmington. Structured as academic cooperatives, OLLI programs are open to adults to take and teach classes together, with course offerings determined by member interest as

well as the passions and expertise of the dedicated volunteer member-instructors at each location. Five-, 10- and 14-week classes are created by members for members, with no grades, exams or educational prerequisites. Classes include art, history, languages, literature, music, science and much more.

Register now for the spring semester!

OLLI Kent and Sussex Counties

Fred Thomas Building
520 Dupont Ave., Lewes, DE 19958
302-645-4111 • olli-kent-sussex@udel.edu
olli.udel.edu/kent-sussex

OLLI Wilmington

Arsht Hall
2700 Pennsylvania Ave.
Wilmington, DE 19806-1169
302-573-4417 • LLL-wilm@udel.edu
olli.udel.edu/wilmington

WHAT MEMBERS SAY...

CAMARADERIE AND LIFELONG LEARNING

"Lifelong learning has always been important to me, although none of my former teachers would be likely to describe me as a highly motivated student. They should see me now: I never thought I could love school this much." —**Joe Bailey, Dover**

"What I love about OLLI? The friendly people, many of whom have become dear friends; the interesting classes and fun events which lead to even more fun events; the camaraderie; and the wonderful, supportive staff." —**Carol West, Ocean View**

CLASSES AND INSTRUCTORS THAT INSPIRE

"My favorite aspect of our UD lifelong learning program as a course leader is the lively interaction with class members. Our shared insights range from humorous to poignant ... and we often laugh heartily together." —**Gary Ramage, Lewes**

"We have found a home here at Osher and are loving our classes. We are truly getting a top-notch education and are so impressed with the hard work and dedication of all the instructors here at OLLI!" —**Ellen and Adam Goldstein, Wilmington**

Interested in Additional Lifelong Learning Opportunities?

The University of Delaware's Master of Arts in Liberal Studies (MALS) program is great for intellectually curious adults. The interdisciplinary program gives students the flexibility to follow their academic passions by shaping their own courses of study. Composed of small seminar classes which invite broad thinking on issues of importance, the program is designed for returning adult students who can attend classes in the evening.

CONTACT:

302-831-4130 • mals.udel.edu
mals-info@udel.edu



UNIVERSITY OF DELAWARE
**PROFESSIONAL &
CONTINUING STUDIES**

501 S. COLLEGE AVENUE • NEWARK, DE 19716

Nonprofit Org.
U.S. Postage
PAID
Permit No. 26
University of
Delaware

BUSINESS & IT | DRONE & INFRARED TRAINING

HEALTHCARE & HEALTH SCIENCES | LAW | SAFETY | TEST PREP

UD PROFESSIONAL DEVELOPMENT PROGRAMS

INFORMATION SESSION

**Wednesday, January 15, 2020
6–8 p.m.**

University of Delaware Audion, The Tower at STAR
100 Discovery Blvd., Newark, DE

Attendance and refreshments are free.
Call 302-831-7600 (reservations requested).

Register and pay in full for a Spring 2020 certificate at or
before the information session and receive a 10% discount.



UNIVERSITY OF DELAWARE
**PROFESSIONAL &
CONTINUING STUDIES**

pcs.udel.edu/spring2020